

Village of Millersburg  
Part of Outlot 123  
Hardy Township  
1st Qtr. Lot 42  
T-9 N; R-7 W  
Holmes County, Ohio

SURVEYED FOR: Brad Maxwell

REFERENCES:

Deeds as shown

Plat Vol. 12 Page 494  
Plat Vol. 12 Page 042  
Plat Vol. 12 Page 744  
Plat Vol. 13 Page 116  
Plat Vol. 04 Page 20  
Plat Vol. 02 Page 132  
Plat Vol. 09 Page 88  
Plat Vol. 19 Page 862  
Plat Vol. 06 Page 60

Basis of Bearing from Ohio State  
Plane Coordinate System, North  
Zone, NAD 83 (2011). Distances  
shown hereon are distances by  
scale factor of 0.9999336319.

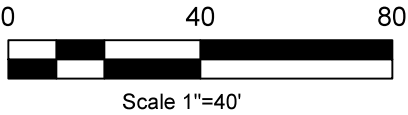
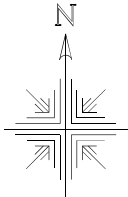


I certify this survey to be correct to the best of  
my knowledge.

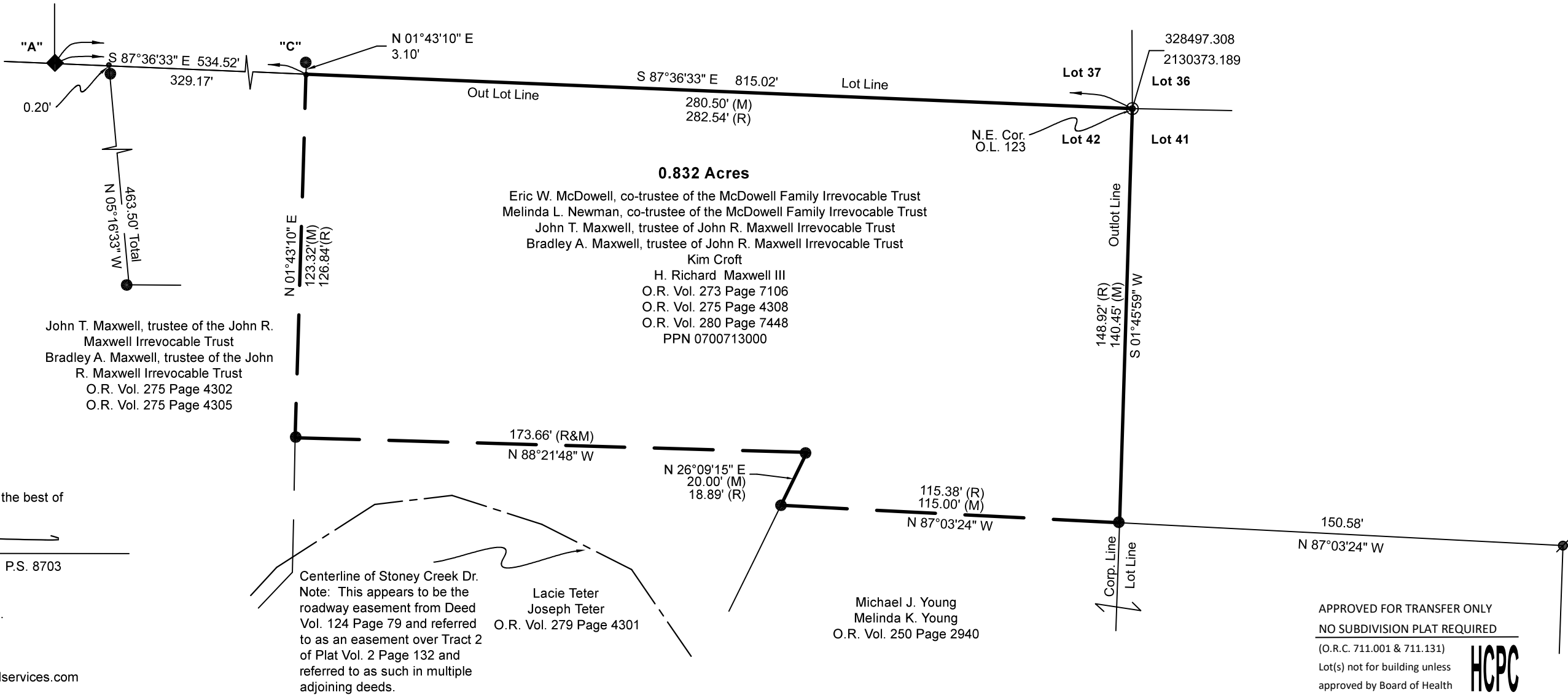
Caleb Jerome Galbraith P.S. 8703  
Date: Jan. 31, 2025  
Job ID: 3225  
Pioneer Surveying & Services, LLC.  
5434 Township Road 377  
Millersburg, Ohio 44654  
Phone: 330-231-0497  
Email: caleb@pioneersurveyingandservices.com



Note: The pin found at "C" is from Plat Vol. 9 Page 88 and Plat Vol. 2 Page 132 and was set by Kasner in 1968. Kasner calculated a point at the northeast corner of O.L. 123, "B", but he never established said northeast corner with a pin. A pipe was set by Gute in 1975 in Plat Vol. 6 Page 160, this pipe has been held as the corner since by surveys from Baker in 1990 and 1991 (Plat Vol. 12 Page 494, Plat 12 Page 744) and Gasbarre in 1988 (Plat Vol. 12 Page 42) and 1990 (Plat Vol. Page 13 Page 116). I chose to hold the north line of O.L. 123 straight from point "A" to "B" as done by Gasbarre in 1988 and 1990 and in doing so also holding the pipe set by Gute in 1975 (Plat Vol. 6 Page 60) at the northeast corner of O.L. 123.



- Pipe Found
- 5/8" Rebar Found
- 5/8" Rebar Found Capped "Baker"
- 2" Bar Found
- Point



202500002255

B: 19 p: 5574

FILED FOR RECORD IN

HOLMES COUNTY, OH

ANITA HALL, COUNTY RECORDER

06/16/2025 09:59 AM

SMALL PLAT . 40.00

PAGES: 1

ORV 292 Pg 3530

APPROVED FOR TRANSFER ONLY  
NO SUBDIVISION PLAT REQUIRED

(O.R.C. 711.001 & 711.131)

Lot(s) not for building unless  
approved by Board of Health

HOLMES CO. PLANNING COMMISSION

By AO Date 5/14/2025

Plat Approved

Holmes County Map Office

5/14/2025 Rg