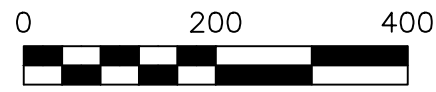


CLARK TOWNSHIP
N.W. & S.W. QTRS.
SECTION 11
T-8 N; R-5 W
HOLMES COUNTY, OHIO
SURVEYED FOR: SAM YODER



SCALE: 1"=200'

- ▲ R.R. SPIKE FOUND
- 5/8" REBAR FOUND UNLESS OTHERWISE NOTED
- MAG NAIL SET
- 5/8" REBAR SET WITH I.D. CAP I.D. CAP MARKED "BAKER 6938"

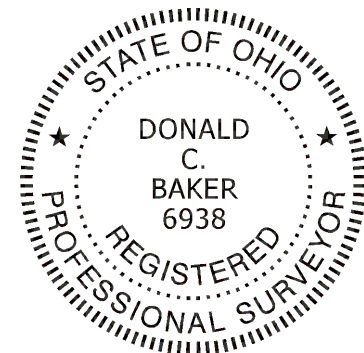
REFERENCES

DEED VOL. 255 PAGE 609
O.R. VOL. 287 PAGE 2612
O.R. VOL. 273 PAGE 553
O.R. VOL. 195 PAGE 3179
O.R. VOL. 282 PAGE 2129
PLAT VOL. 18 PAGE 437
PLAT VOL. 12 PAGE 870
PLAT VOL. 19 PAGE 980

BASIS OF BEARINGS FROM
OHIO STATE COORDINATE
SYSTEM, NORTH ZONE, N.A.D. 83,
2011 ADJUSTMENT

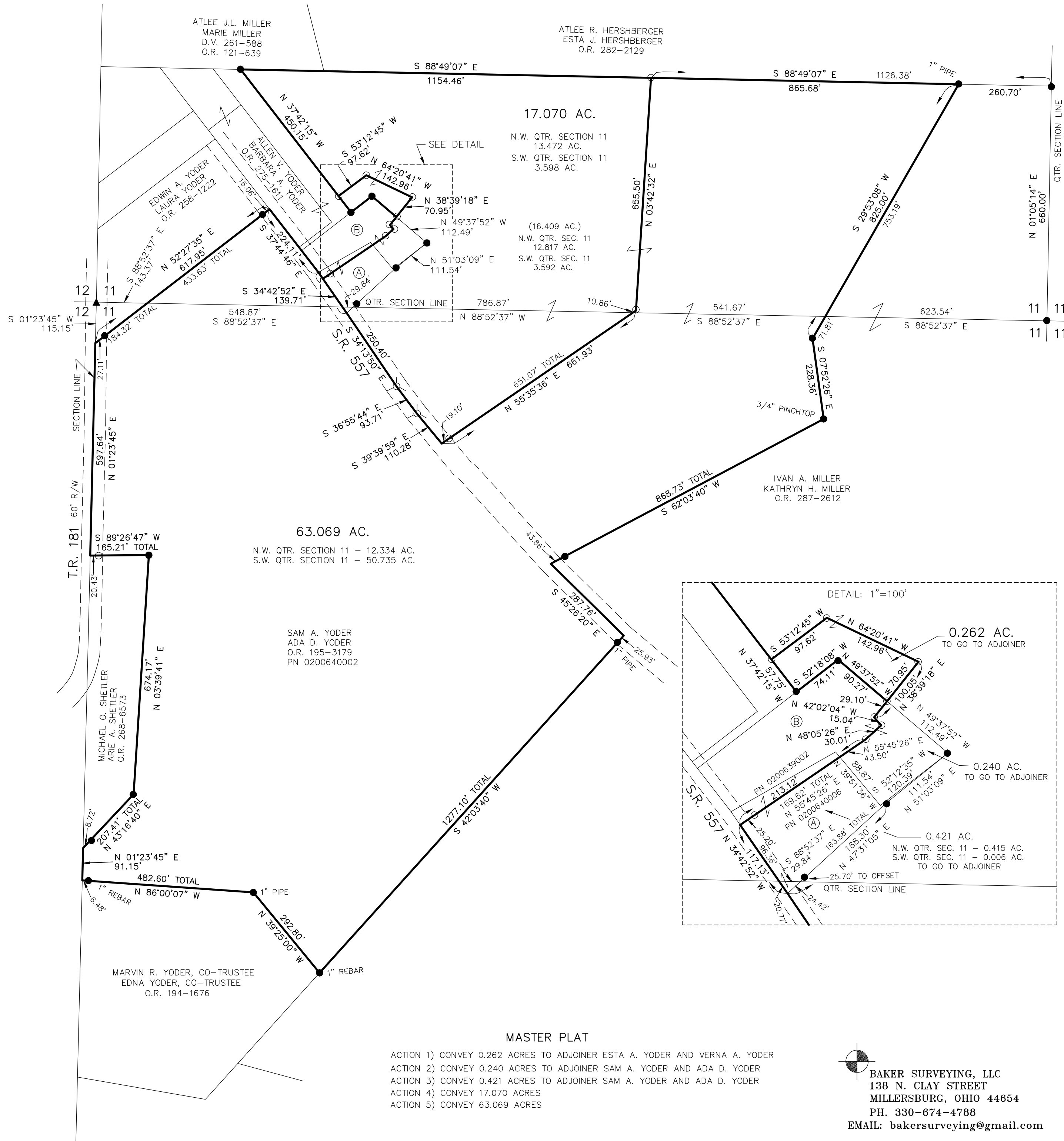
(A) ESTA A. YODER
VERNA A. YODER
O.R. 273-553
PN 0200640006

(B) ESTA A. YODER
VERNA A. YODER
D.V. 255-609
PN 0200639002



I CERTIFY THIS SURVEY TO BE CORRECT
TO THE BEST OF MY KNOWLEDGE.

Donald C. Baker
DONALD C. BAKER P.S. 6938
DATE: APRIL 9, 2024
KES
FILE NAME: WORK6\S-93-24\CNK



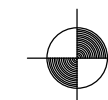
202400001969

B: 19 P: 5289
FILED FOR RECORD IN
HOLMES COUNTY, OH
ANITA HALL, COUNTY RECORDER
05/31/2024 12:56 PM
SMALL PLAT . 40.00
PAGES: 1

ORV 288 Pg 6723
ORV 288 Pg 6726
ORV 288 Pg 6729
ORV 288 Pg 6732
ORV 288 Pg 6736

MASTER PLAT

- ACTION 1) CONVEY 0.262 ACRES TO ADJOINER ESTA A. YODER AND VERNA A. YODER
- ACTION 2) CONVEY 0.240 ACRES TO ADJOINER SAM A. YODER AND ADA D. YODER
- ACTION 3) CONVEY 0.421 ACRES TO ADJOINER SAM A. YODER AND ADA D. YODER
- ACTION 4) CONVEY 17.070 ACRES
- ACTION 5) CONVEY 63.069 ACRES



BAKER SURVEYING, LLC
138 N. CLAY STREET
MILLERSBURG, OHIO 44654
PH. 330-674-4788
EMAIL: bakersurveying@gmail.com

APPROVED FOR TRANSFER ONLY
NO SUBDIVISION PLAT REQUIRED
(O.R.C. 711.001 & 711.131)
Lot(s) not for building unless
approved by Board of Health
HOLMES CO. PLANNING COMMISSION
By AO Date 5/21/2024



Plat Approved
Holmes County Map Office
5/17/2024 MM