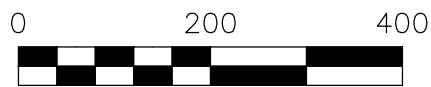


BERLIN TOWNSHIP
N.E. QTR. SECTION 5
T-9 N; R-5 W
HOLMES COUNTY, OHIO

SURVEYED FOR: ERVIN YODER



SCALE: 1"=200'

- ▲ R.R. SPIKE FOUND
- 5/8" REBAR FOUND UNLESS OTHERWISE NOTED
- 5/8" REBAR SET WITH I.D. CAP I.D. CAP MARKED "BAKER SURVEYING LLC"

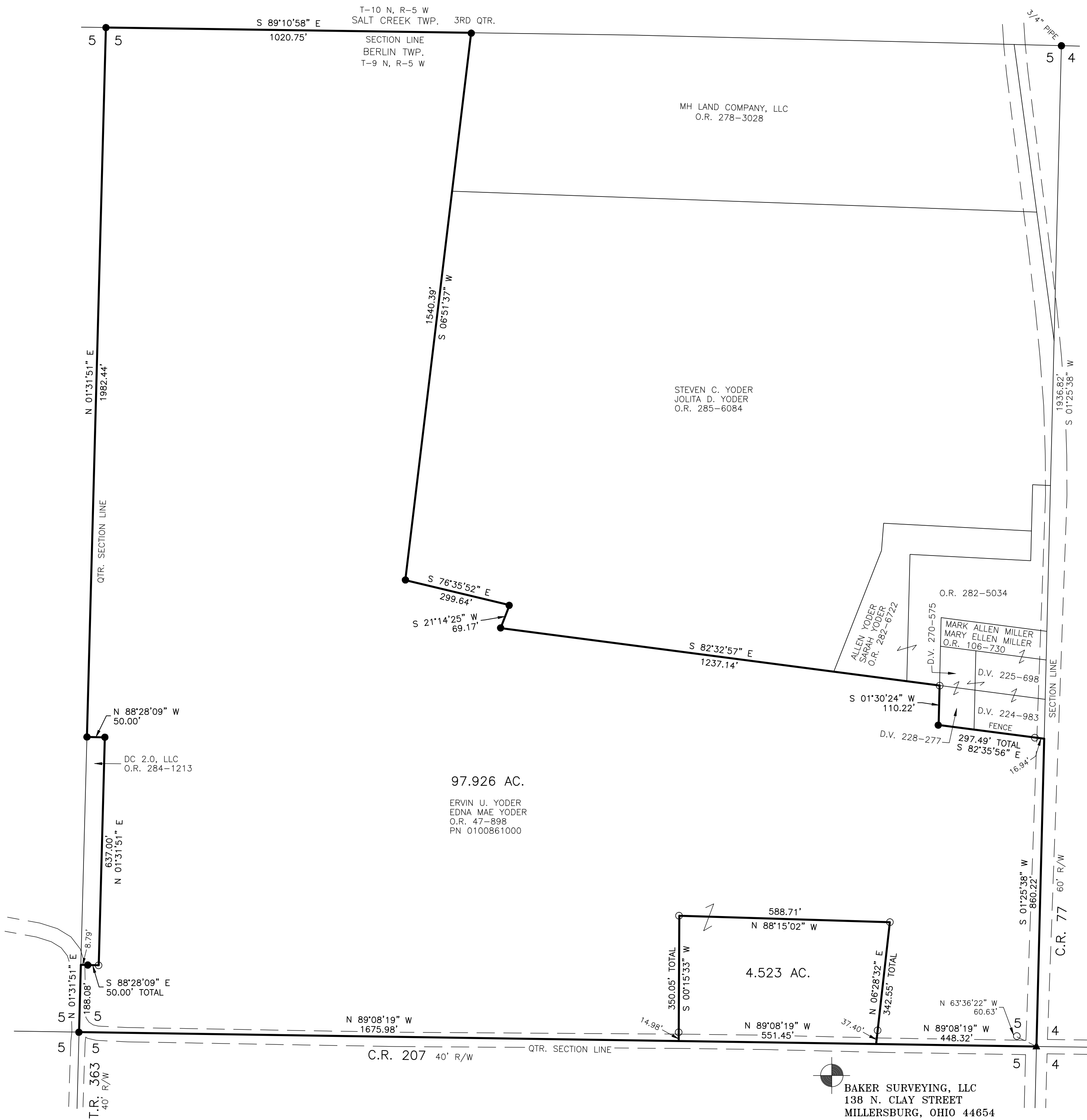
REFERENCES

- DEED VOL. 228 PAGE 277
- DEED VOL. 224 PAGE 983
- O.R. VOL. 278 PAGE 3028
- O.R. VOL. 285 PAGE 6084
- O.R. VOL. 47 PAGE 898
- PLAT VOL. 19 PAGE 5018
- PLAT VOL. 19 PAGE 4786
- PLAT VOL. 19 PAGE 2663

BASIS OF BEARINGS FROM OHIO STATE PLANE COORDINATE SYSTEM, NORTH ZONE, N.A.D. 83, 2011 ADJUSTMENT

MASTER PLAT

- ACTION 1) CONVEY 4.523 ACRES
- ACTION 2) CONVEY 97.926 ACRES



20240001804

B: 19 P: 5278
FILED FOR RECORD IN
HOLMES COUNTY, OH
ANITA HALL, COUNTY RECORDER
05/21/2024 09:44 AM
SMALL PLAT . 40.00
PAGES: 1

ORV 288 PG 6029
ORV 288 PG 6032



I CERTIFY THIS SURVEY TO BE CORRECT TO THE BEST OF MY KNOWLEDGE.

A.L.G.
AARON L. GERBER P.S. 8379
DATE: OCT. 2, 2023
ALG
FILE NAME: WORK5\S-546-23\CNK

APPROVED FOR TRANSFER ONLY
NO SUBDIVISION PLAT REQUIRED
(O.R.C. 711.001 & 711.131)
Lot(s) not for building unless approved by Board of Health
HOLMES CO. PLANNING COMMISSION
By AO Date 4/25/2024



BAKER SURVEYING, LLC
138 N. CLAY STREET
MILLERSBURG, OHIO 44654
PH. 330-674-4788
EMAIL: bakersurveying@gmail.com

Plat Approved
Holmes County Map Office
4/24/2024 Rg