

MAP OFFICE COPY

N.W. 1/4

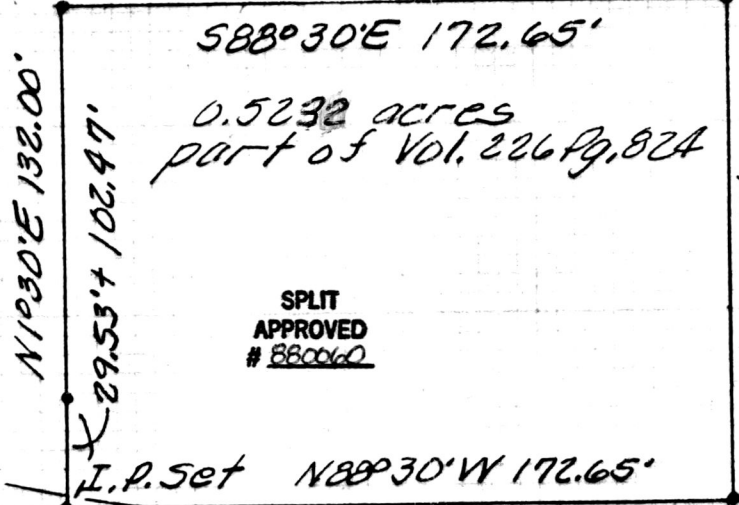
Robert, E., Lynn, Janet
& Jacqueline Crilow

(I.P. Set Vol. 233 Pg. 777

I. Pin called for, not found

N. E. 1/4

NORTH



57 acre tract
Lynn A. Crilow
Vol. 212 Pg. 125

T.R. 571

This plat not approved for any use
that generates wastewater.

Mat Miller 4-14-58

Sanitarian Date

I.P. set called for, not found see Note A

Row of Stumps

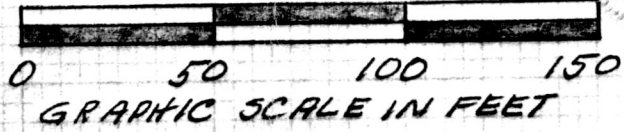
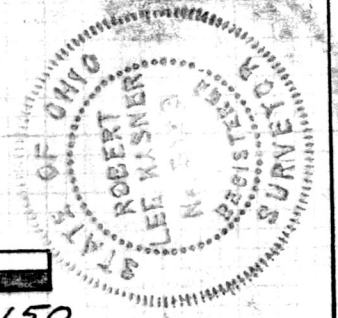
Emanuel J. & Katie D. about 7'
Hershberger
Vol. 226 Pg. 824

T.R. 568

S. E. 1/4

S.W. 1/4

Note A: This pin had been destroyed
and was reset using the row
of stumps to the east, the
fence line to the south,
evidence of a field edge to the
North and the angular relat-
ionships in Vol. 212 Pg. 125. Both
adjoining property owners
were there and were satis-
fied with the location. 159621



Emanuel J. & Katie D. Hershberger
to
Lynn & Janet Crilow
Known as part of the N.W.
1/4 of Sec. 12, T. 13 N., R. 13 W. of
Prairie Twp., Hol. Co., Ohio
Robert L. Kasner P.S. 5193
411188 P.E. 28820

Rec'd. MAY 2 1988 AT 9:36 O'CLOCK AM

Recorded MAY 2 1988 Holmes Co. Ohio Fee 5.00

Plat Vol. 238 Pg. 950 Recorder Richard Yaman

VOL 10 PAGE 950