

73.

14x8 1/2

(For photostat copy, see Volume 4 page 61.)

71112

RECORDED: Sept 6-1961
 AT 2:10 O'CLOCK P.M.
 RECORDED: Sept 7-1961
 HOLMES CO. Plat VOL. 3, P. 42 B.
 FEB 5 1969
 Evelyn Autumn RECORDER

Nick Derr

I.G. Gerstenlager

I.G. Gerstenlager

I.G. Gerstenlager

Frank Danner

6 Acres
 Deeded to I.G. Gerstenlager
 by Nick Derr

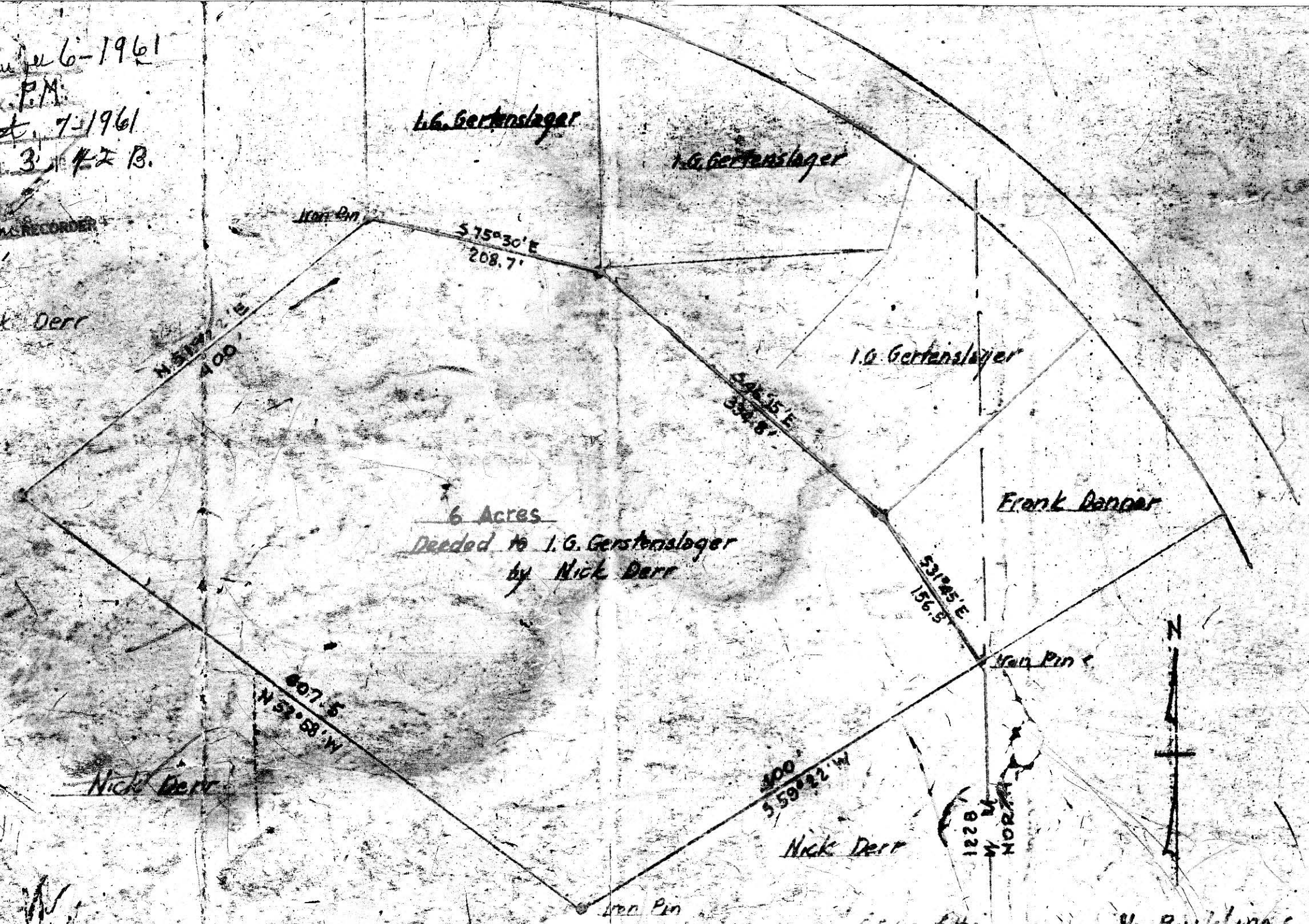
Nick Derr

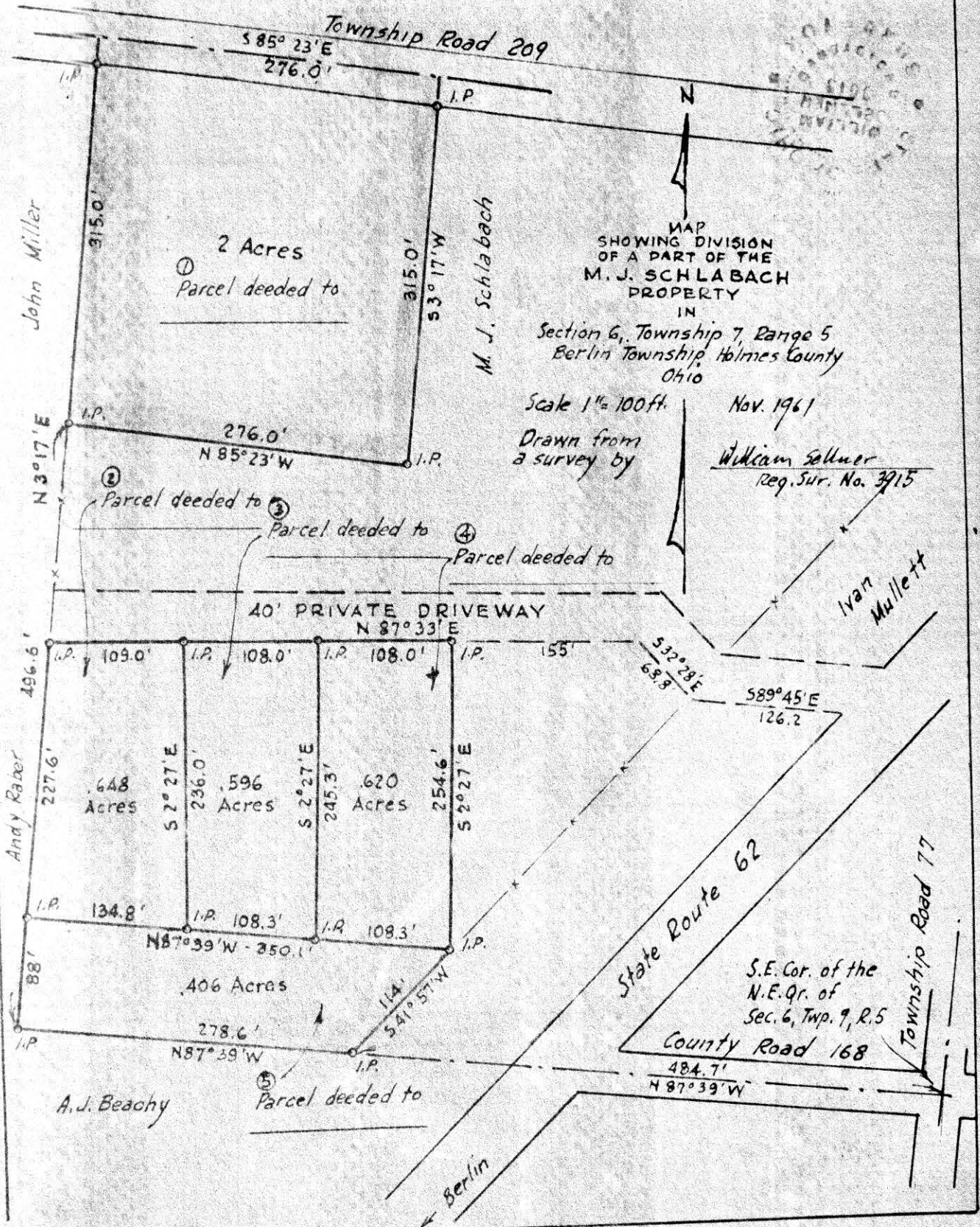
Nick Derr

1221
 N
 W
 N
 W



No Buildings





MAP
SHOWING DIVISION
OF A PART OF THE
M. J. SCHLABACH
PROPERTY
IN
Section 6, Township 7, Range 5
Berlin Township, Holmes County
Ohio

Scale 1" = 100 ft.
Nov. 1961
Drawn from
a survey by
William Sallner
Reg. Sur. No. 3915

Ivan Mullett

#71733

REC'D: December 29, 1961
AT 2:20 O'CLOCK P.M.
RECORDED: Jan. 2, 1962
HOLMES CO. VOL. 2 PG. 42-B
FEE: \$ 1.00
Carlyle C. Coulson RECORDER

RECTD: July 5, 1962
AT 1:30 O'CLOCK P.M.
RECORDED: July 6, 1962
HOLMES CO. PLATVOL 2 PG. 42-B
FEE: \$ 1.00

Evelyn Anderson RECORDER
s.a.

O. D. McCluggage



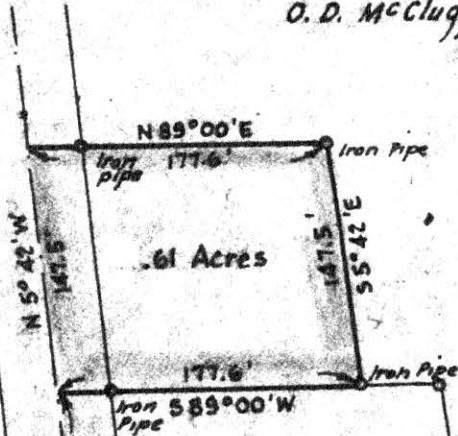
Ralph McCluggage

Southwest corner of
fractional section 14,
Township 10, Range 13

377.5'
N80°15'E

Millersburg
N18°25'E

O. D. McCluggage



Norman R. Seaman
116 Acres

O. D. McCluggage

State Route 76

230'

N

MAP
SHOWING LOCATION
OF A PARCEL OF LAND
DECEDED BY
O. D. MCCLUGGAGE
TO
LOUIS MORAVY

IN
Section 14, Township 10, Range 13
Prairie Township, Holmes County
Ohio

Scale 1" = 100 ft.

June 1962

Drawn from a
survey by

William Sellner
Reg. Sur. No. 3915