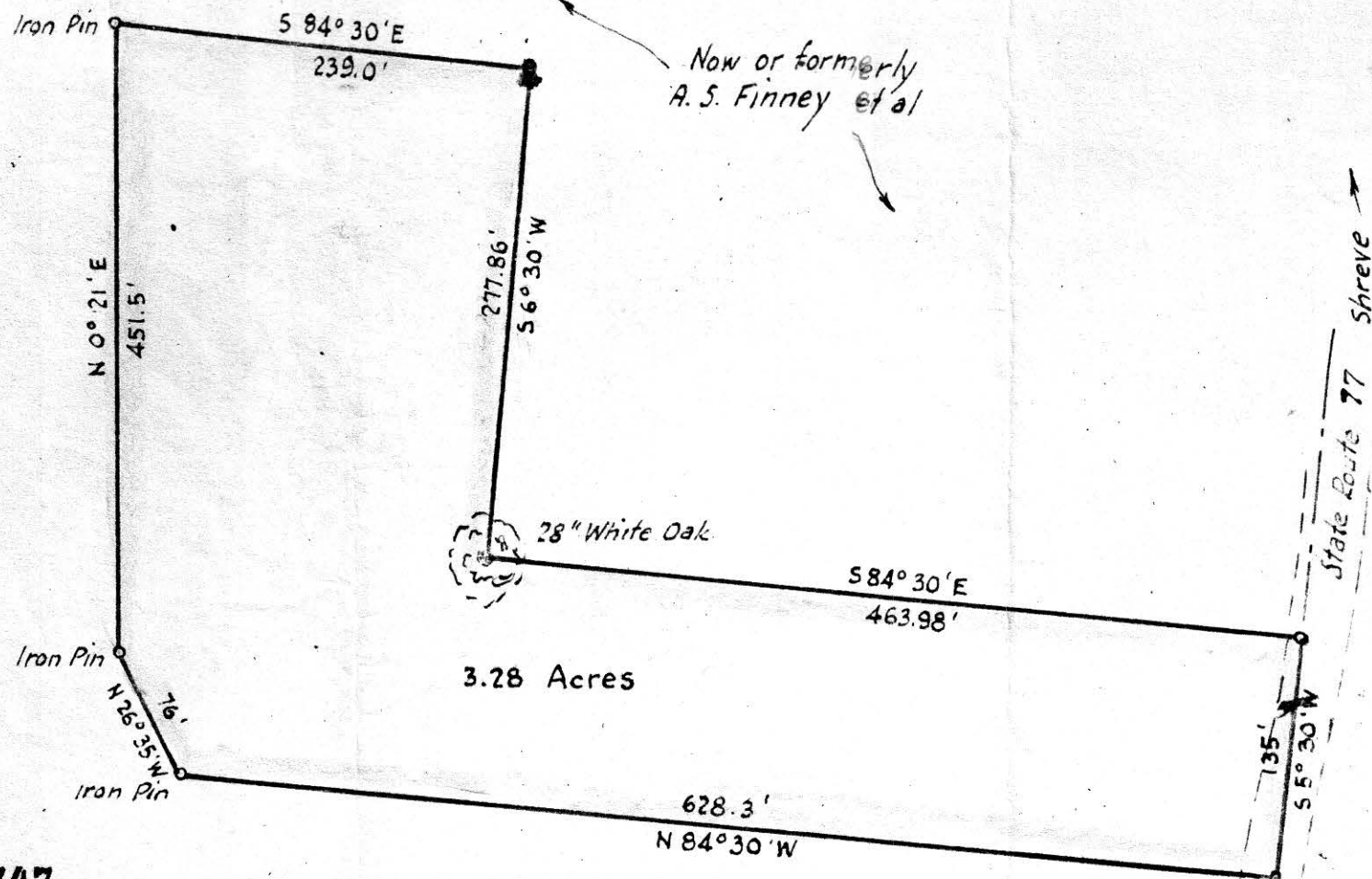


Lee H. Wolfe



Now or formerly
A. S. Finney et al

28" White Oak

3.28 Acres

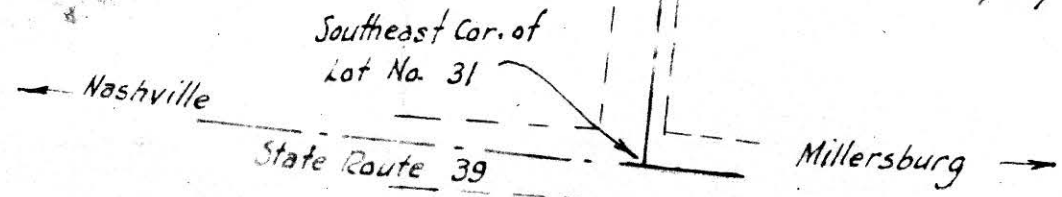
State Route 77 Shreve

Guy Bergoon

54747

Received... July 8 1958
 At 10 o'clock... P.M.
 Recorded... July 8 1958
 In Holmes County
 Record of... Plate...
 Vol. 3... Page 23...
 Recorder
 Recorder's Fee \$1.20...

Lee H. Wolfe



MAP
 SHOWING LOCATION
 OF A PARCEL OF LAND
 DEEDED BY
 LEE H. WOLFE AND EDITH WOLFE
 TO
 WM. A. GIEB AND MARGARET E. GIEB
 Lot 31, 1st Qr., Township 9, Range 8
 Monroe Township, Holmes County
 Ohio

Scale 1" = 100 ft.

Drawn from a
survey by

June 1958

William Seltner
 Reg. Sur. No. 3915

1





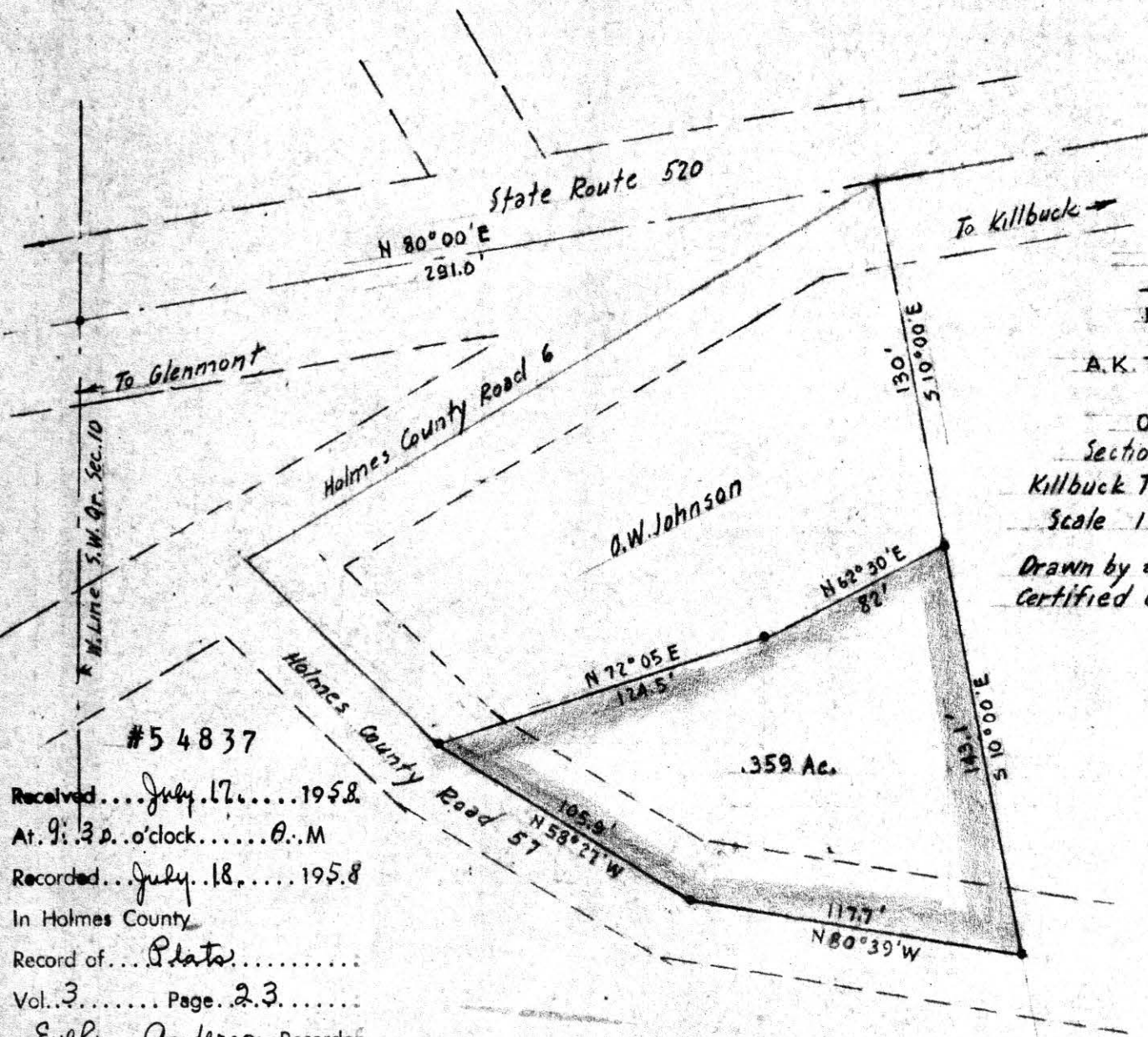
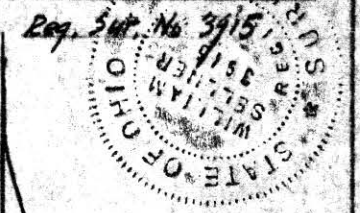
MAP

SHOWING LOCATION
OF A
PARCEL OF LAND
ON THE

A.K. TAYLOR PROPERTY
DEEDED TO
O.W. JOHNSON

Section 10, Twp. 8, Range 8
Killbuck Township, Holmes County, O.
Scale 1" = 50 ft. July 1957

Drawn by and
Certified Correct *William G. Miller*



#54837

Received... July 17... 1958

At 9:30 o'clock... A.M

Recorded... July 18... 1958

In Holmes County

Record of... *Plata*.....

Vol. 3..... Page 23.....

Evelyn Anderson, Recorder
i.a.

Recorder's Fee \$1.00.....