

2400633000 ① Ervin A. and Susie Ann Herzhberger
OR 21-99 11/25/1998
1.67 ac p.7-351

2400626001 ② Eli A. Yoder
166-279 4/25/1968
258-343 12/28/1992
OR 199-3034 9/24/2007
0.9233 ac p.14-103

2400626002 ③ Rivertree Holdings, LLC
OR 54-632 6/30/2000
0.4404 ac p.14-116

2400626001 ④ Rivertree Holdings, LLC
OR 54-632 6/30/2000
1.6066 ac p.12-810

3400446000 ⑤ Japheth A. Yoder and Rhoda L. Weaver
OR 189-2108 6/12/2006
0.971 ac p.10-320

3400442000 ⑥ Joel A. and Ruby Yoder
OR 190-2276 7/27/2006
1.082 ac p.12-366

2400201000 ⑦ Emanuel Jr. and Fannie Mast
187-535 6/14/1974
1.308 ac p.12-366

3400248003 ⑧ Board of Education East Holmes Local School District
OR 175-3123 10/25/2004
0.828 ac p.19-214

3400307000 ⑨ Leroy E. and Mattie Miller
OR 200-619 10/9/2007
0.234 ac p.19-1158

3400380000 ⑩ Owen E. and Laura Mast
OR 58-126 9/7/2000
OR 66-497 1/25/2001
0.219 ac p.12-384

3400381000 ⑪ Owen E. and Laura Mast
OR 58-126 9/7/2000
OR 66-497 1/25/2001
0.219 ac p.12-384

3400248001 ⑫ Larry A. and Nettie Miller
266-856 12/14/1994
1.61 ac p.14-663

3400200000 ⑬ Board of Education East Holmes Local School District
243-501 5/26/1989
1.0 ac p.12-223

3400248002 ⑭ Larry A. and Nettie Miller
OR 175-2811 10/21/2004
1.812 ac p.19-214

3400653000 ⑮ Abe L. and Barbara Yoder
186-665 3/25/1974
OR 92-805 11/9/2001
1.38 ac p.5-30

3400271000 ⑯ Calvin R. and Betty Miller
225-449 8/19/1985
1.64 ac p.5-133

3400520000 ⑰ Albert A. and Linda J. Summers
150-141 4/29/1963
278-918 7/8/1997
0.53 ac p.3-90 B

3400766000 ⑱ Wayne-Dalton Corp.
OR 36-456 8/5/1999
1.0 ac p.8-378

3400677000 ⑲ Paul A. and Betty Yoder
OR 59-944 10/6/2000
0.62 ac p.5-30

3400075000 ⑳ D and P Enterprises
188-546 7/1/1977
0.5 ac

3400575000 ㉑ Wayne-Dalton Corp.
225-669 12/6/1984
1.0 ac

3400597000 ㉒ Wayne-Dalton Corp.
225-669 12/6/1984
1.1 ac

3400608000 ㉓ Ivan M. and Ada Weaver
244-782 9/21/1989
0.502 ac p.12-298

3400607000 ㉔ Ivan M. and Ada Weaver
165-347 1/12/1966
0.5 ac p.4-74

3400318000 ㉕ Ivan M. and Elia Miller
251-183 4/30/1991
0.494 ac p.12-646

3400130001 ㉖ Board of Education East Holmes Local School District
OR 183-3096 10/11/2005
0.602 ac p.19-520

3460007000 ㉗ Holmes County Board of Commissioners
230-411 2/27/1986
0.6457 ac p.11-19

3400192005 ㉘ Andy C. and Linda Mast
208-832 2/29/1980
0.25 ac

3400521001 ㉙ Mt. Hope Inc. Ltd.
OR 43-342 12/7/1999
1.561 ac p.16-641

2400224001 ㉚ Noah A. and Neva Rober
OR 51-66 4/28/2000
0.808 ac p.17-471

2400201001 ㉛ Noah A. and Neva Rober
OR 51-66 4/28/2000
0.194 ac p.17-471

3400374001 ㉜ Roman J. and Barbara A. Yoder
OR 133-276 12/24/2002
0.072 ac p.18-487

3400192007 ㉝ Andy C. and Linda Mast
208-832 2/29/1980
1.8663 ac

3400284002 ㉞ Owen E. and Laura Mast
OR 200-1162 10/16/2007
0.492 ac p.19-1136

3400192002 ㉟ Ivan M. and Ada Weaver
OR 148-236 5/6/2003
0.207 ac p.18-607

3400192001 ㊱ Ivan M. and Elia Miller
OR 148-234 5/6/2003
1.201 ac p.18-607

3400248004 ㊲ Board of Education East Holmes Local School District
OR 186-368 1/12/2006
1.063 ac p.19-520

3400192008 ㊳ Board of Education East Holmes Local School District
OR 197-2455 6/14/2007
0.143 ac p.19-1050

3400364000 ㊴ Mose L. and/or Mattie Miller
181-414 9/11/1972
1.5 ac

3400767000 ㊵ Wayne-Dalton Corp.
225-669 12/6/1984
7.3 ac total in Sec.1 and 12

3400653000 ㊶ Michael and Mary Lou Weaver
OR 148-238 5/6/2003
2.0 ac p.18-607

3400192003 ㊷ Albert A. and Linda J. Summers
183-178 3/3/1973
278-918 7/8/1997
2.039 ac p.5-133

3400598000 ㊸ Wayne-Dalton Corp.
225-669 12/6/1984
2.051 ac

3400766000 ㊹ Wayne-Dalton Corp.
242-942 4/17/1989
6.419 ac p.12-187

3400767000 ㊺ Wayne-Dalton Corp.
225-669 12/6/1984
7.3 ac total in Sec.1 and 12

3400767000 ㊻ Wayne-Dalton Corp.
225-669 12/6/1984
7.3 ac total in Sec.1 and 12

3400767000 ㊼ Wayne-Dalton Corp.
225-669 12/6/1984
7.3 ac total in Sec.1 and 12

3400767000 ㊽ Wayne-Dalton Corp.
225-669 12/6/1984
7.3 ac total in Sec.1 and 12

3400767000 ㊾ Wayne-Dalton Corp.
225-669 12/6/1984
7.3 ac total in Sec.1 and 12

3400767000 ㊿ Wayne-Dalton Corp.
225-669 12/6/1984
7.3 ac total in Sec.1 and 12

3400767000 ㊽ Wayne-Dalton Corp.
225-669 12/6/1984
7.3 ac total in Sec.1 and 12

3400767000 ㊾ Wayne-Dalton Corp.
225-669 12/6/1984
7.3 ac total in Sec.1 and 12

3400767000 ㊿ Wayne-Dalton Corp.
225-669 12/6/1984
7.3 ac total in Sec.1 and 12

3400767000 ㊽ Wayne-Dalton Corp.
225-669 12/6/1984
7.3 ac total in Sec.1 and 12

3400767000 ㊾ Wayne-Dalton Corp.
225-669 12/6/1984
7.3 ac total in Sec.1 and 12

3400767000 ㊿ Wayne-Dalton Corp.
225-669 12/6/1984
7.3 ac total in Sec.1 and 12

3400767000 ㊽ Wayne-Dalton Corp.
225-669 12/6/1984
7.3 ac total in Sec.1 and 12

3400767000 ㊾ Wayne-Dalton Corp.
225-669 12/6/1984
7.3 ac total in Sec.1 and 12

3400767000 ㊿ Wayne-Dalton Corp.
225-669 12/6/1984
7.3 ac total in Sec.1 and 12

3400767000 ㊽ Wayne-Dalton Corp.
225-669 12/6/1984
7.3 ac total in Sec.1 and 12

3400767000 ㊾ Wayne-Dalton Corp.
225-669 12/6/1984
7.3 ac total in Sec.1 and 12

3400767000 ㊿ Wayne-Dalton Corp.
225-669 12/6/1984
7.3 ac total in Sec.1 and 12

3400767000 ㊽ Wayne-Dalton Corp.
225-669 12/6/1984
7.3 ac total in Sec.1 and 12

3400767000 ㊾ Wayne-Dalton Corp.
225-669 12/6/1984
7.3 ac total in Sec.1 and 12

3400767000 ㊿ Wayne-Dalton Corp.
225-669 12/6/1984
7.3 ac total in Sec.1 and 12

3400767000 ㊽ Wayne-Dalton Corp.
225-669 12/6/1984
7.3 ac total in Sec.1 and 12

3400767000 ㊾ Wayne-Dalton Corp.
225-669 12/6/1984
7.3 ac total in Sec.1 and 12

3400767000 ㊿ Wayne-Dalton Corp.
225-669 12/6/1984
7.3 ac total in Sec.1 and 12

3400767000 ㊽ Wayne-Dalton Corp.
225-669 12/6/1984
7.3 ac total in Sec.1 and 12

3400767000 ㊾ Wayne-Dalton Corp.
225-669 12/6/1984
7.3 ac total in Sec.1 and 12

3400767000 ㊿ Wayne-Dalton Corp.
225-669 12/6/1984
7.3 ac total in Sec.1 and 12

3400767000 ㊽ Wayne-Dalton Corp.
225-669 12/6/1984
7.3 ac total in Sec.1 and 12

3400767000 ㊾ Wayne-Dalton Corp.
225-669 12/6/1984
7.3 ac total in Sec.1 and 12

3400767000 ㊿ Wayne-Dalton Corp.
225-669 12/6/1984
7.3 ac total in Sec.1 and 12

3400767000 ㊽ Wayne-Dalton Corp.
225-669 12/6/1984
7.3 ac total in Sec.1 and 12

3400767000 ㊾ Wayne-Dalton Corp.
225-669 12/6/1984
7.3 ac total in Sec.1 and 12

3400767000 ㊿ Wayne-Dalton Corp.
225-669 12/6/1984
7.3 ac total in Sec.1 and 12

3400767000 ㊽ Wayne-Dalton Corp.
225-669 12/6/1984
7.3 ac total in Sec.1 and 12

3400767000 ㊾ Wayne-Dalton Corp.
225-669 12/6/1984
7.3 ac total in Sec.1 and 12

3400767000 ㊿ Wayne-Dalton Corp.
225-669 12/6/1984
7.3 ac total in Sec.1 and 12

3400767000 ㊽ Wayne-Dalton Corp.
225-669 12/6/1984
7.3 ac total in Sec.1 and 12

3400767000 ㊾ Wayne-Dalton Corp.
225-669 12/6/1984
7.3 ac total in Sec.1 and 12

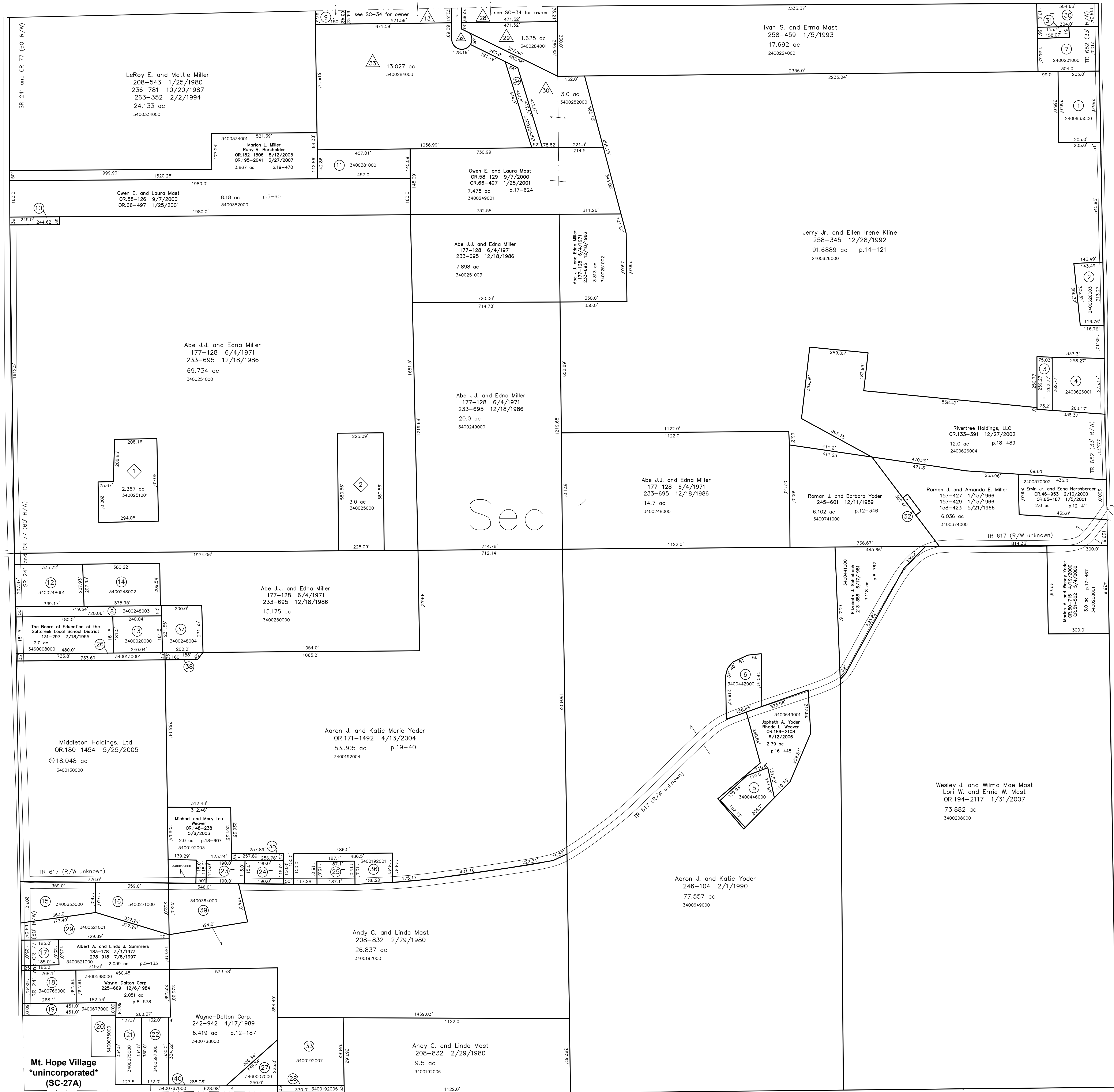
3400767000 ㊿ Wayne-Dalton Corp.
225-669 12/6/1984
7.3 ac total in Sec.1 and 12

3400767000 ㊽ Wayne-Dalton Corp.
225-669 12/6/1984
7.3 ac total in Sec.1 and 12

3400767000 ㊾ Wayne-Dalton Corp.
225-669 12/6/1984
7.3 ac total in Sec.1 and 12

3400767000 ㊿ Wayne-Dalton Corp.
225-669 12/6/1984
7.3 ac total in Sec.1 and 12

T15, R12, Sec.36 SC-34



T14, R12, Sec. 2 SC-28

T14, R12, Sec. 12 SC-32

⬡ A & L Subdivision
Plat 2-372 Platted 10/3/2003

3400251001 ⬡ A & L Real Estate, Ltd.
OR 170-787 2/25/2004
2.367 ac p.2-372

3400250001 ⬡ Leon A. and Laura Miller
OR 170-785 2/25/2004
3.0 ac p.2-372

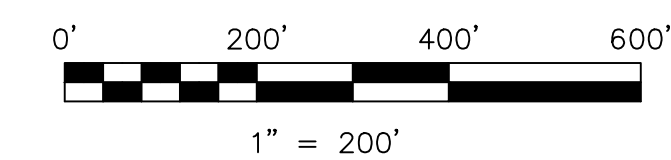
⬠ Hopeview Subdivision Allotment No. 1 Second Addition
Plat 2-384 Platted 6/18/2004

3400284001 ⬠ Ben and Savilla Miller
OR 176-399 11/2/2004
1.628 ac p.2-384

3400282000 ⬠ David A. and Marie Miller
OR 176-397 11/2/2004
3.0 ac p.2-384

⬠ Hopeview Subdivision Allotment No. 1 Second Addition Replat of Lot 31
Plat 19-1136 Platted 9/17/2007

3400284003 ⬠ Willis D. and Anna Kathryn Miller
OR 176-395 11/2/2004
13.027 ac p.19-1136



LET IT BE KNOWN, THIS MAP HAS BEEN PREPARED AS A REFERENCE GUIDE TO PROPERTY OWNERSHIP. WE BELIEVE THIS INFORMATION TO BE CORRECT AND CURRENT, HOWEVER IT IS NOT INTENDED FOR ANY LEGAL USE, WHETHER IT BE IN SALES, TRANSFERS, TRADES, LEASES OF ANY TYPE, ETC., AND DO NOT ACCEPT RESPONSIBILITY FOR ERRORS OF ANY NATURE OR OMISSIONS CONTAINED HEREIN.

⊙ new survey required for next transfer

Last Revision: 10/16/2007

T-14, R-12, Sec. 1
Salt Creek Twp.
Holmes County, Ohio

SC-33