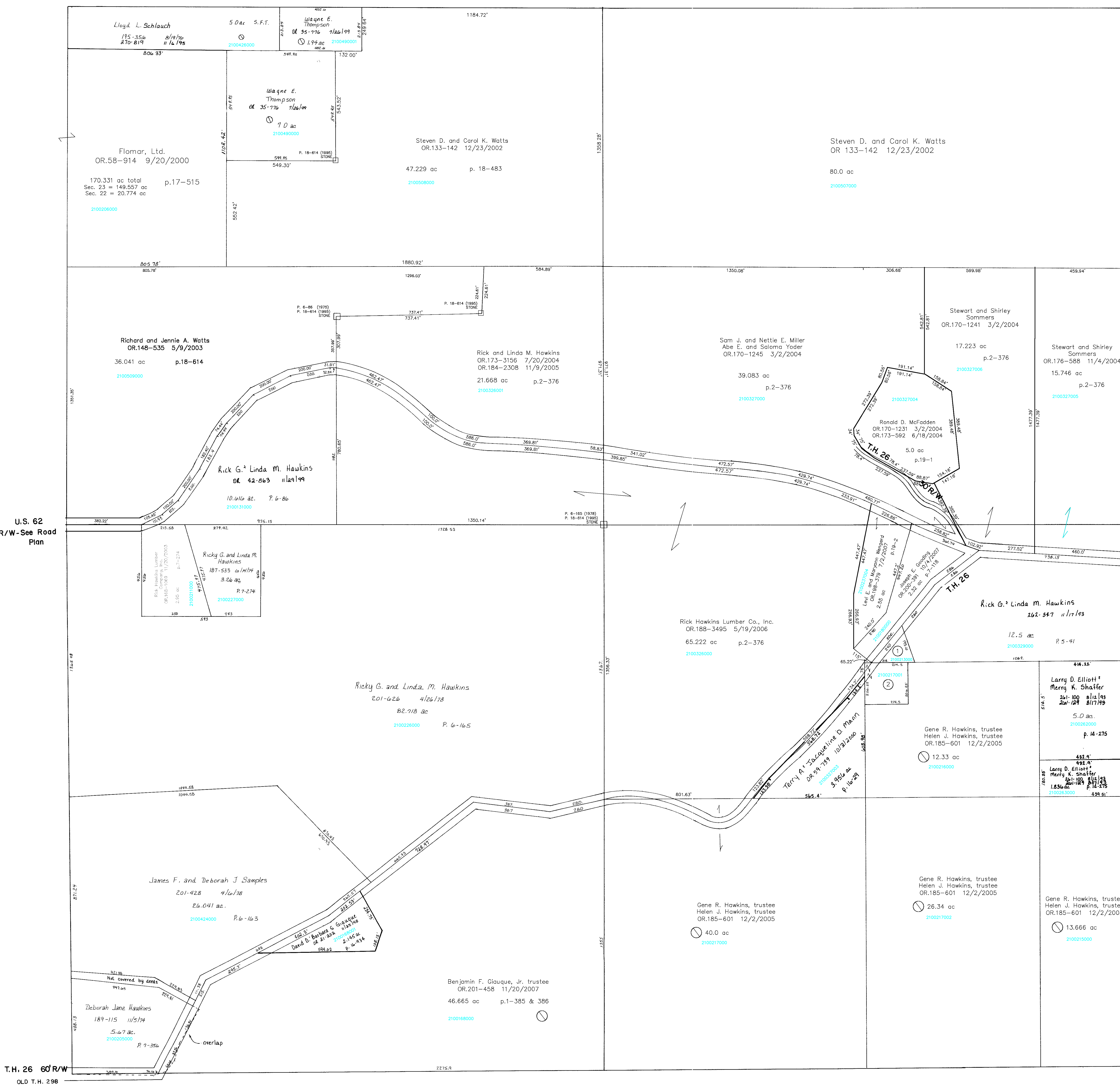


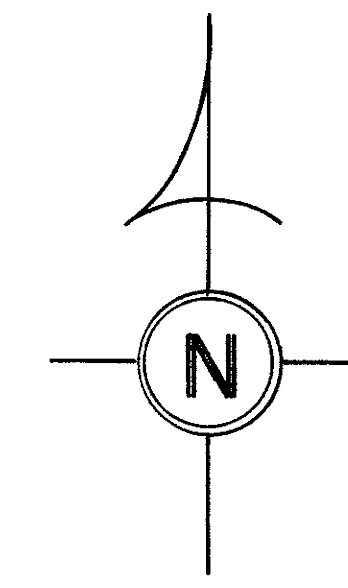
Section 19
R-17



This point called NE Cor SE Cor per Plat Vol. 5 Pg. 42 and Vol. 7 Pg. 112 + 118

U.S. 62
R/W - See Road Plan

Section 21
R-21



- 2100213000 ① Gene R. Hawkins, trustee and Helen J. Hawkins, trustee
OR.185-601 12/2/2005
0.45 ac p.7-112
- 2100217001 ② Gene R. Hawkins, trustee and Helen J. Hawkins, trustee
OR.185-601 12/2/2005
1.0 ac

Coshocton County

T-8, R-9, Sec. 22
RICHLAND TWP.
SCALE 1" = 200'

Last Revision: 11/20/2007

LET IT BE KNOWN, THIS MAP HAS BEEN PREPARED AS A REFERENCE GUIDE TO PROPERTY OWNERSHIP. WE BELIEVE THIS INFORMATION TO BE CORRECT AND CURRENT, HOWEVER, IT IS NOT INTENDED FOR ANY LEGAL USE, WHETHER IT BE IN SALES, TRANSFERS, TRADES, LEASES OF ANY TYPE, ETC., AND DO NOT ACCEPT RESPONSIBILITY FOR ERRORS OF ANY NATURE OR OMISSIONS CONTAINED HEREIN.

R-16