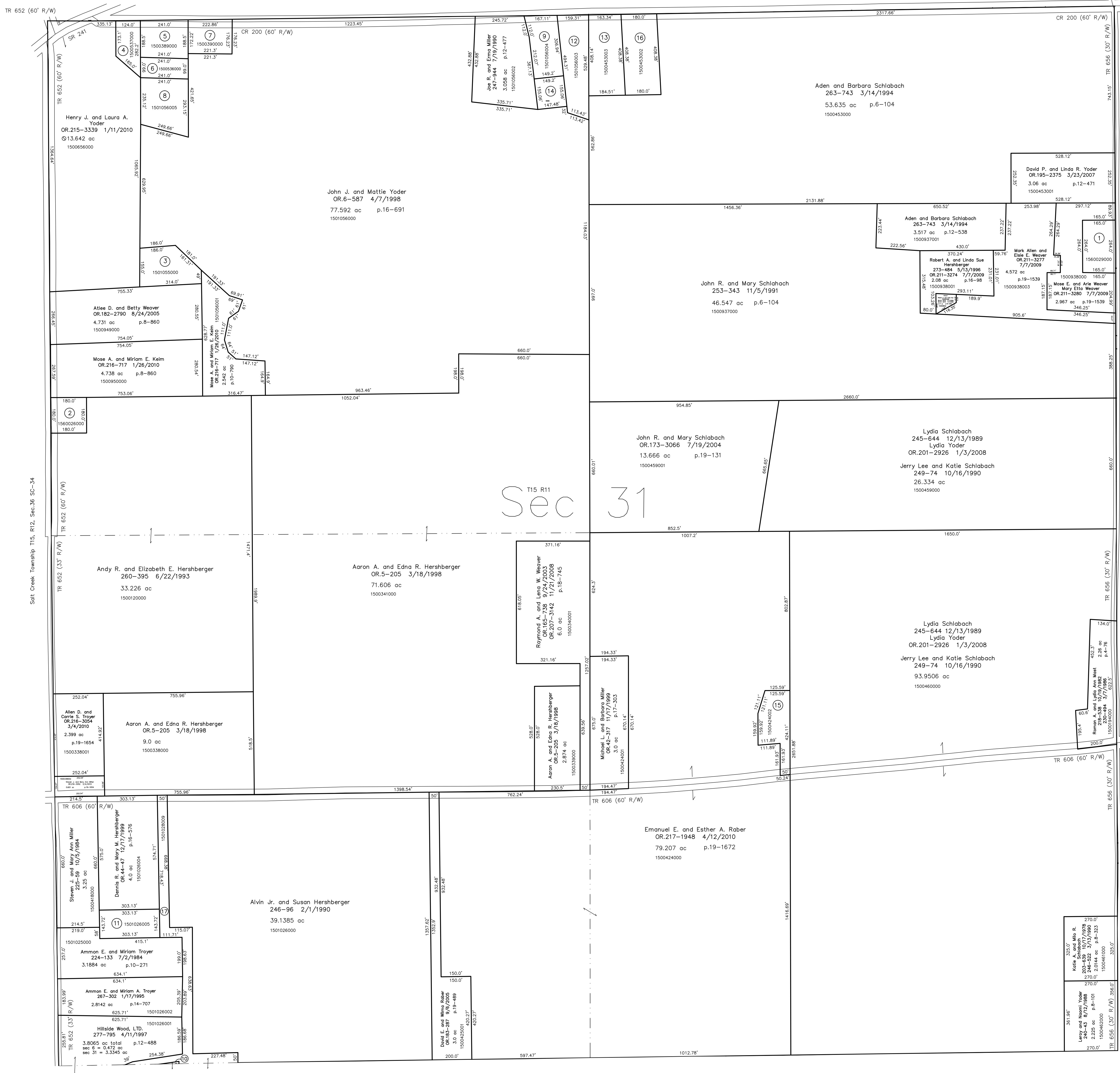
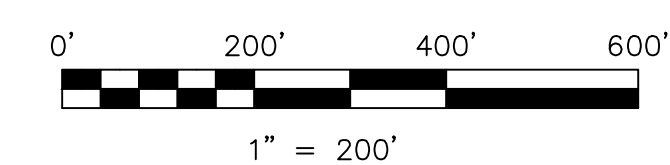


- 1560029000 ① Board of Education of Paint Township Rural School Dist. 90-346 1/22/1937 1.0 ac
- 1560026000 ② Board of Education of Dublin Private School 132-215 2/11/1956 0.774 ac
- 1501055000 ③ Althea D. and Betty Weaver OR 182-2790 8/24/2005 0.961 ac p.10-415
- 1500537000 ④ David A. and Mabel Troyer 196-464 11/17/1976 0.648 ac p.2-78
- 1500389000 ⑤ David A. and Mabel Troyer 281-697 12/4/1997 1.04 ac cal.
- 1500536000 ⑥ David A. and Mabel Troyer 196-464 11/17/1976 0.55 ac
- 1500390000 ⑦ David A. and Mabel Troyer 281-697 12/4/1997 0.81 ac p.4-58
- 1501056000 ⑧ David A. and Mabel A. Troyer 267-878 3/14/1995 1.461 ac p.14-763
- 1501056004 ⑨ Curtis E. Yoder, trustee Rhonda J. Yoder, trustee OR 197-1954 6/7/2007 Freda N. Yoder, trustee OR 176-165 10/29/2004 1.106 ac p.14-755
- 1501028004 ⑩ Freeman D. and Mattie Yoder 269-432 7/17/1995 0.0114 ac p.14-861
- 1501028005 ⑪ Ammon E. and Miriam Troyer OR 5-963 3/30/1998 1.0 ac p.16-576
- 1501056003 ⑫ Dennis J. and Ella N. Weaver OR 175-3318 10/28/2004 1.532 ac p.14-352
- 1500453003 ⑬ Roy J. and Ada Mae Kauffman OR 188-863 12/7/2005 1.629 ac p.19-563
- 1501056006 ⑭ Curtis E. Yoder, trustee Rhonda J. Yoder, trustee OR 197-1954 6/7/2007 0.528 ac p.18-205
- 1500424002 ⑮ Miriam E. Rober OR 192-2689 11/1/2006 1.137 ac p.19-853
- 1500453002 ⑯ Roy J. and Ada Mae Kauffman 258-922 2/17/1993 1.686 ac p.14-148
- 1501028009 ⑰ Robert A. Hershberger OR 200-3087 11/9/2007 2.163 ac p.19-1178

T15, R11, Sec.30 P-18



T14, R11, Sec.7 P-16



LET IT BE KNOWN, THIS MAP HAS BEEN PREPARED AS A REFERENCE GUIDE TO PROPERTY OWNERSHIP. WE BELIEVE THIS INFORMATION TO BE CORRECT AND CURRENT, HOWEVER IT IS NOT INTENDED FOR ANY LEGAL USE, WHETHER IT BE IN SALES, TRANSFERS, TRADES, LEASES OF ANY TYPE, ETC., AND DO NOT ACCEPT RESPONSIBILITY FOR ERRORS OF ANY NATURE OR OMISSIONS CONTAINED HEREIN.

new survey required for next transfer

Last Revision: 4/12/2010  
**T-15, R-11, Sec.31**  
**Paint Twp.**  
**Holmes County, Ohio**

P-17

T15, R11, Sec.32 P-20