

H-10

H-09

H-15

MV-03

H-22

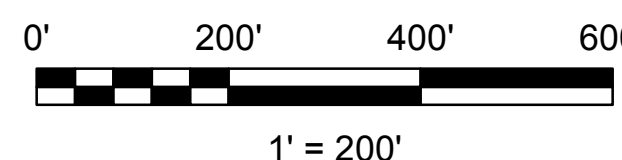
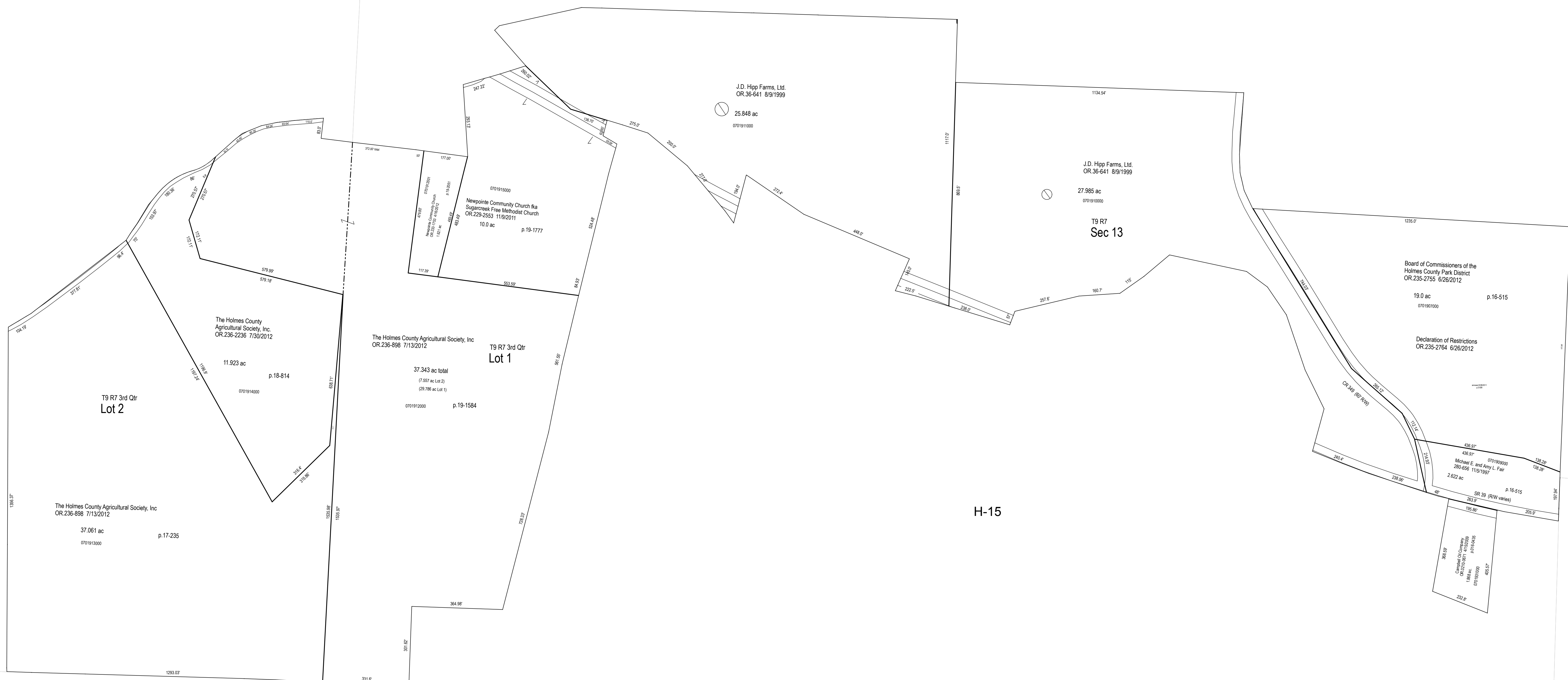
MV-06

MV-06

H-21

H-08

H-14



LET IT BE KNOWN, THIS MAP HAS BEEN PREPARED AS A REFERENCE GUIDE TO PROPERTY OWNERSHIP. WE BELIEVE THIS INFORMATION TO BE CORRECT AND CURRENT, HOWEVER IT IS NOT INTENDED FOR ANY LEGAL USE, WHETHER IT BE SALES, TRANSFERS, TRADES, LEASES OF ANY TYPE, ETC. AND DO NOT ACCEPT RESPONSIBILITY FOR ERRORS OF ANY NATURE OR OMISSIONS CONTAINED HEREIN.

S.F.T.  
 new survey required  
 for next transfer

Last Revision: 12/31/2014



**Incorporated  
 Village of Millersburg  
 Part Lots 1 & 2, 3rd Qtr. & Sec. 13, T-9, R-7  
 Hardy Twp.  
 Holmes County, Ohio**

**MV-17**