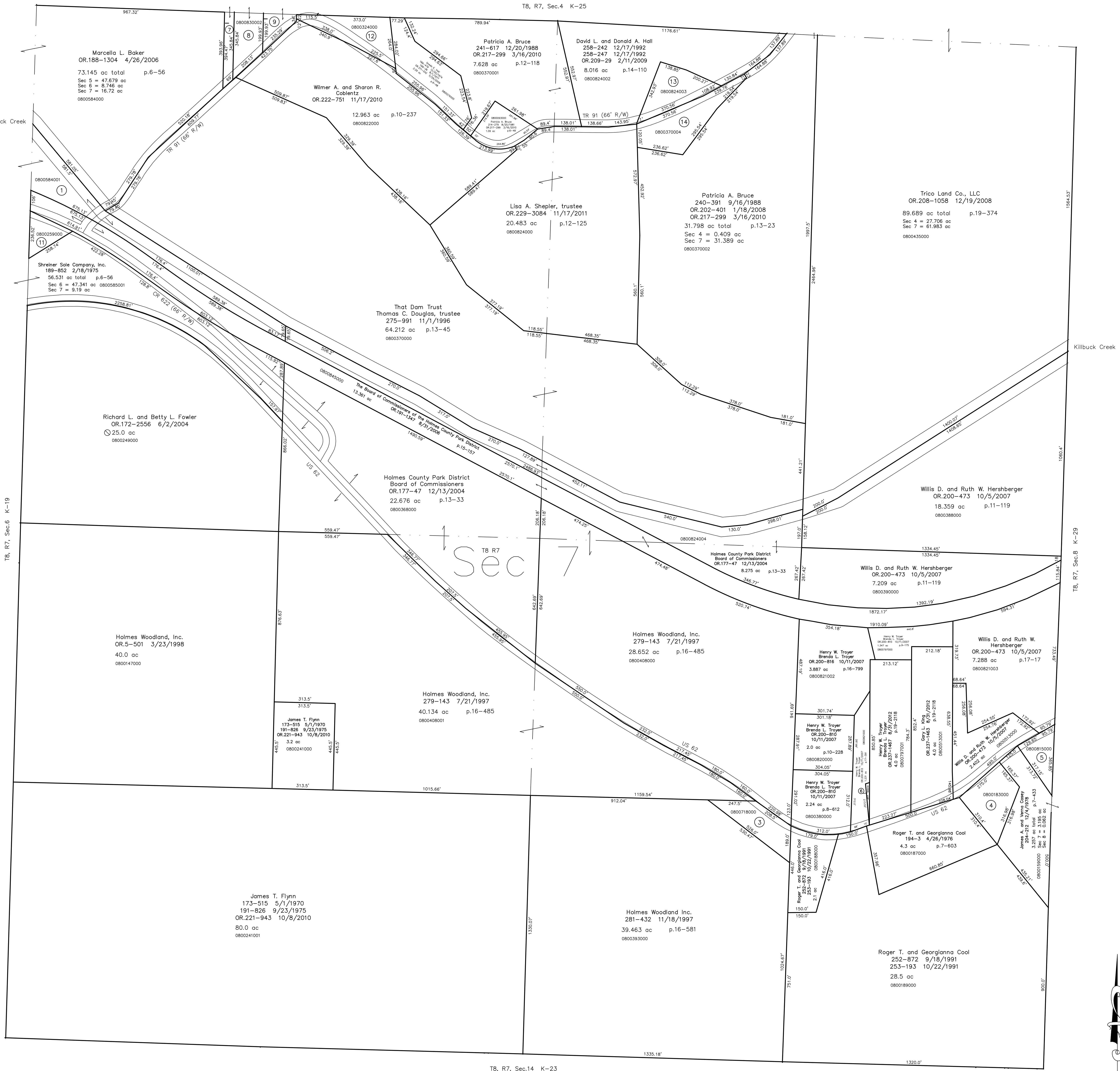
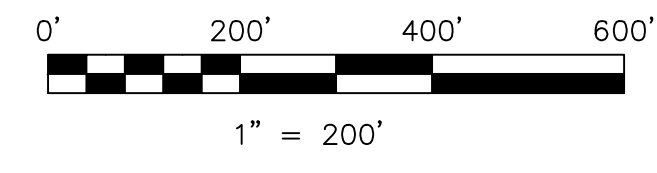


- 0800584001 (1) Killbuck Watershed Land Trust
OR.193-2227 12/13/2006
3.887 ac p.19-887
- 0800718000 (3) Henry A. and Marcelle L. Baber
OR.23-81 12/15/1998
1.2 ac
- 0800183000 (4) Jim Klintworth
231-315 6/2/1986
OR.177-2565 1/19/2005
1.5 ac p.7-433
- 0800815000 (5) James A. and Verna L. Casey
222-207 11/23/1983
0.821 ac p.10-214
- 0800821001 (6) Henry W. Troyer and Brenda L. Troyer
OR.200-810 10/11/2007
0.059 ac p.12-462
- 0800830004 (7) Marcella L. Baker
268-54 4/3/1995
0.425 ac p.2-248
- 0800830002 (8) Franklin D. and Sandra J. Baker
268-49 4/3/1995
0.94 ac p.2-248
- 0800830000 (9) Marcella L. Baker
268-54 4/3/1995
0.457 ac p.2-248
- 0800259000 (11) Shreiner Sole Company, Inc.
234-756 4/6/1987
0.524 ac
- 0800324000 (12) Helen L. Jones
427-423 6/4/1962
285-186 7/12/1994
0.10 ac
- 0800824003 (13) Oxford Away, LLC
OR.188-1789 5/2/2006
1.416 ac p.19-694
- 0800370004 (14) Lisa A. Shepler
241-751 12/29/1988
1.967 ac p.13-44



Last Revision: 8/31/2012
T-8, R-7, Sec.7
Killbuck Twp.
Holmes County, Ohio



LET IT BE KNOWN, THIS MAP HAS BEEN PREPARED AS A REFERENCE GUIDE TO PROPERTY OWNERSHIP. WE BELIEVE THIS INFORMATION TO BE CORRECT AND CURRENT. HOWEVER IT IS NOT INTENDED FOR ANY LEGAL USE, WHETHER IT BE IN SALES, TRANSFERS, TRADES, LEASES OF ANY TYPE, ETC., AND DO NOT ACCEPT RESPONSIBILITY FOR ERRORS OF ANY NATURE OR OMISSIONS CONTAINED HEREIN.

new survey required for next transfer

K-24