

Hickory Spring Subdivision  
Plat 18-702 Platted 8/12/2003  
0600381002 Darryl L. and Jennifer G. Kurtz  
OR.161-97 8/18/2003  
2.708 ac p.18-702

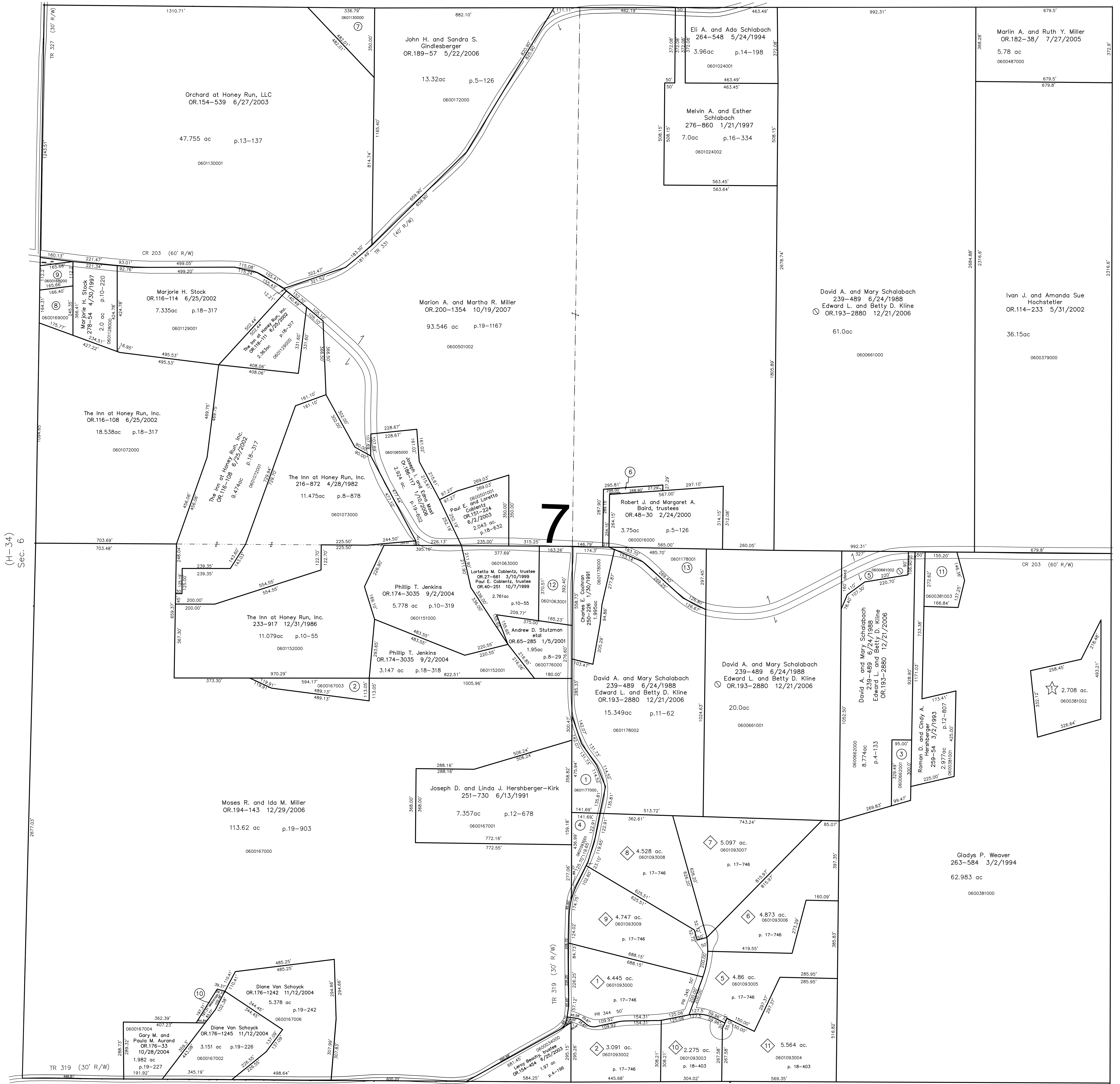
Honey Run Village  
Plat 17-746 Platted 12/29/2000  
0601093000 1 Norman E. and Candace L. Phillips  
OR.163-151 9/3/2003  
4.445 ac p.17-746  
0601093002 2 Wendy R. and Leah F. Swartzentruber  
OR.191-1462 8/31/2006  
3.091 ac p.17-746

0601093005 5 Marc A. and Corinne M. Lehman  
OR.199-643 8/22/2007  
4.86 ac p.17-746  
0601093006 6 James B. and Virginia L. Norton  
OR.174-897 5/15/2001  
4.873 ac p.17-746  
0601093007 7 James B. and Virginia L. Norton  
OR.191-2474 9/18/2006  
4.528 ac p.17-746  
0601093008 8 Joshua E. and Susan M. Crilow  
OR.191-2474 9/18/2006  
4.528 ac p.17-746  
0601093009 9 Aaron Jamin and Carrie Anne Yoder  
OR.206-2168 9/8/2008  
4.747 ac p.17-746

Replat of Lots 3 & 4  
Plat 18-403 Platted 10/8/2002

0601093003 10 Marjorie H. Stock  
OR.205-116 6/12/2008  
2.275 ac p.18-403  
0601093004 11 Marjorie H. Stock  
219-724 3/3/1983  
5.564 ac p.18-403

(H-34)  
Sec. 6

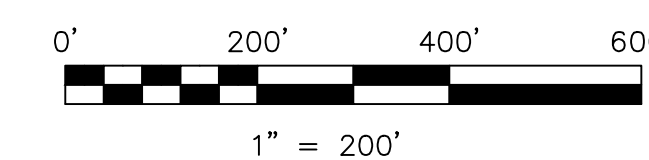


0601177000 1 Joseph D. and Linda J. Hershberger-Kirk  
227-715 6/14/1985  
1.106 ac p.10-425  
060167003 2 The Inn at Honey Run, Inc.  
263-857 3/24/1994  
0.973 ac p.14-471  
0600662001 3 Roman D. and Cindy A. Hershberger  
OR.40-24 10/5/1999  
0.686 ac p.17-261  
0601093001 4 Mose R. and Ida M. Miller  
OR.203-409 3/7/2008  
0.808 ac p.17-723  
0600661002 5 David A. and Mary Schlabach  
239-489 6/24/1988  
Edward L. and Betty D. Kline  
OR.193-2880 12/21/2006  
1.0 ac  
0601023000 6 Robert J. and Margaret A. Baird, trustees  
OR.48-33 2/24/2000  
0.349 ac p.8-859

0601130000 7 John H. and Sandra S. Gindlesberger  
OR.189-57 5/22/2006  
1.353 ac p.13-137  
0600169000 8 Jeffery J. and Viola S. Allison  
OR.39-741 10/1/1999  
0.776 ac p.8-157  
0600168000 9 Jeffery J. and Viola S. Allison  
OR.39-741 10/1/1999  
0.46 ac  
060167005 10 Diane Van Schoyck  
OR.176-1242 11/12/2004  
0.184 ac p.19-242  
0600381003 11 John M. and Debra J. Vallone  
OR.207-125 9/30/2008  
1.122 ac p.19-356

0601063001 12 Loretta M. Coblenz, trustee  
OR.27-654 3/10/1999  
Paul E. Coblenz, trustee  
OR.40-253 10/7/1999  
1.432 ac p.17-23  
0601178001 13 Robert J. and Margaret A. Baird,  
trustees  
OR.48-36 2/24/2000  
1.55 ac p.10-518

S.F.T. new survey required  
for next transfer



LET IT BE KNOWN, THIS MAP HAS BEEN PREPARED AS A REFERENCE GUIDE TO PROPERTY OWNERSHIP. WE BELIEVE THIS INFORMATION TO BE CORRECT AND CURRENT, HOWEVER IT IS NOT INTENDED FOR ANY LEGAL USE, WHETHER IT BE IN SALES, TRANSFERS, TRACES, LEASES OF ANY TYPE, ETC., AND DO NOT ACCEPT RESPONSIBILITY FOR ERRORS OF ANY NATURE OR OMISSIONS CONTAINED HEREIN.

Last Revision: 9/30/2008

**T-9, R-6, Section 7  
HARDY TWP.  
HOLMES COUNTY, OHIO**

**H-39**