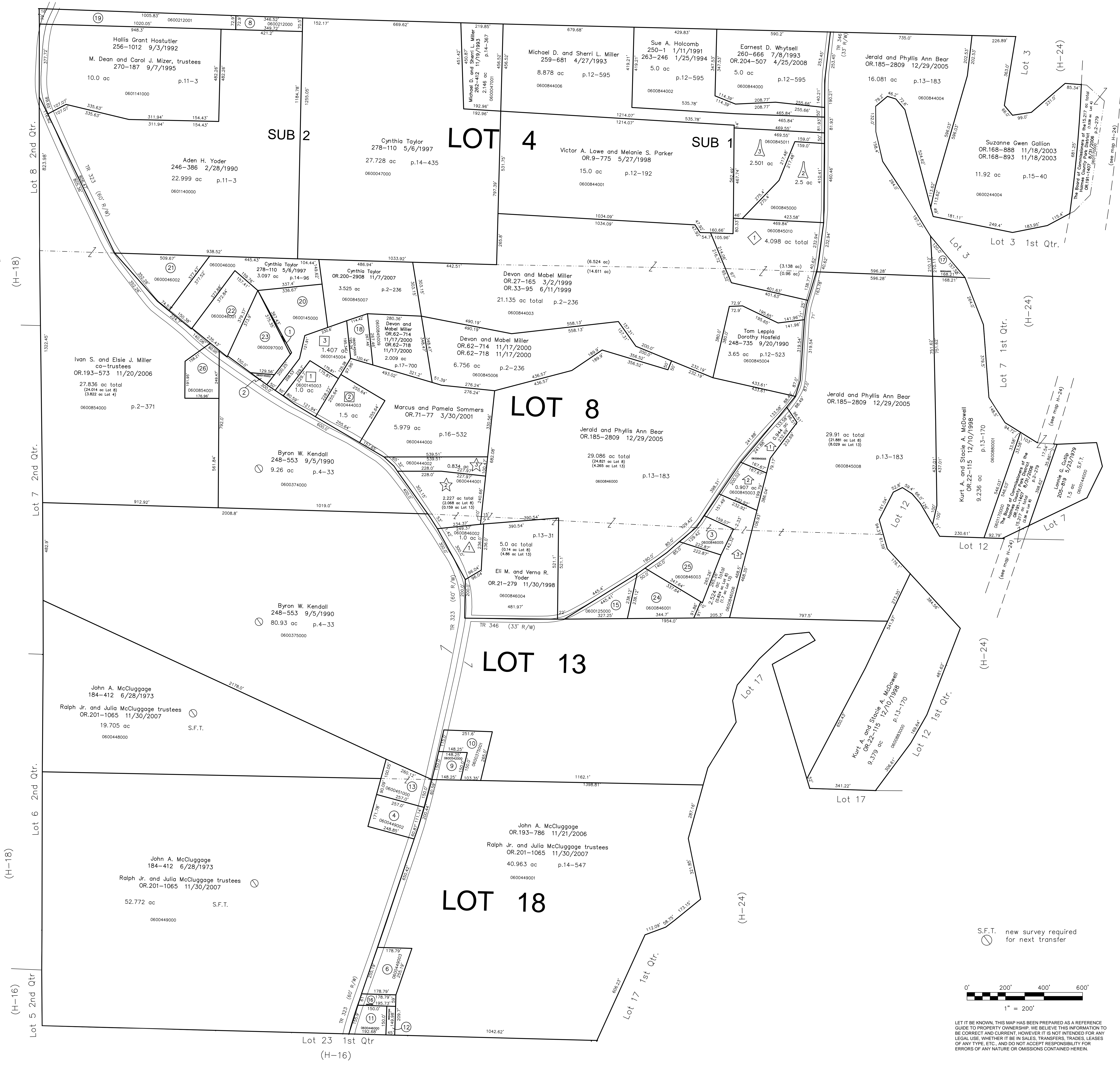
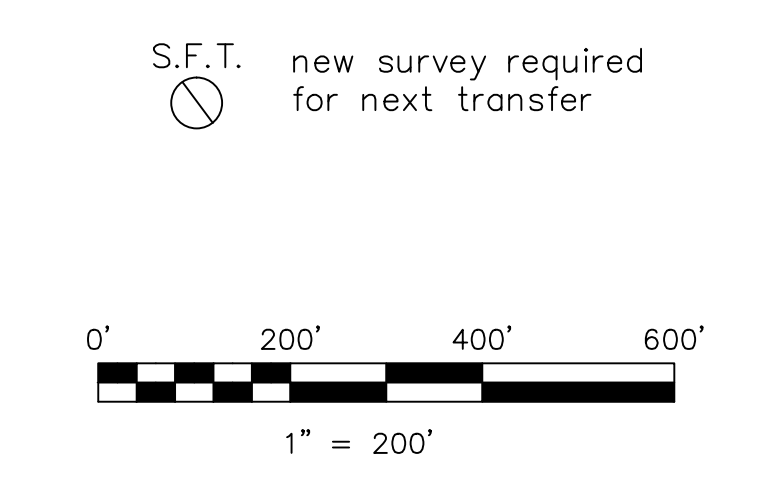


- 0600145001 ① MAYNARD HARVEY L. AND LYNN S. 237-913 1/29/1988 0.041 ac p.10-896
- 0600145002 ② MAYNARD HARVEY L. AND LYNN S. 237-913 1/29/1988 0.082 ac p.10-896
- 0600846005 ③ STROUSE JAMES D. AND LOIS E. 241-151 11/4/1988 0.649 ac p.13-31
- 0600449002 ④ MCLUGGAGE CHERYL ANN OR.0108-331 3/28/2002 1.0 ac p.18-243
- ⑤ Not used
- 0600449003 ⑥ MCLUGGAGE DAVID OR.0168-1414 11/24/2003 OR.0169-978 1/6/2004 1.0 ac p.18-813
- ⑦ Not used
- 0600212000 ⑧ MARTIN DAVID N. AND JAMES N. OR.0148-430 5/16/2003 0.573 ac p.12-922
- 0600542000 ⑨ Wayne E. Miller OR.193-3073 12/22/2006 0.50 ac p.5-14
- 0600375001 ⑩ Wayne E. Miller OR.193-3073 12/22/2006 1.0 ac p.14-502
- 0600446000 ⑪ MCLUGGAGE JOHN A. AND PHYLLIS A. 147-381 3/29/1962 0.59 ac p.3-559
- 0600447000 ⑫ MCLUGGAGE JOHN A. AND PHYLLIS A. 184-417 6/28/1973 0.154 ac p.7-70
- 0600451000 ⑬ Ralph Jr. and Julia McCluggage, trustees OR.201-1065 11/30/2007 1.0 ac total p.7-70 (0.705 ac Lot 18 + 0.295 ac Lot 13)
- ⑭ Not used
- 0600125000 ⑮ David E. and Suzanne E. Peight OR.184-2079 11/7/2005 0.872 ac p.7-247
- 0600447001 ⑯ MCLUGGAGE DAVID OR.0168-1416 11/26/2003 0.256 ac p.18-813
- 0600244002 ⑰ GALLON SUZANNE GWEN OR.0168-888 11/18/2003 OR.0168-893 11/18/2003 0.405 ac p.15-40
- 0600145005 ⑱ MILLER DEVON AND MABEL OR.0168-1948 12/2/2003 0.592 ac p.18-819
- 0600212001 ⑲ MOSSOR, JEROD J. LANE, SAMANTHY E. 284-219 4/26/1994 1.794 ac p.12-922
- 0600145000 ⑳ Cynthia Taylor OR.200-2908 11/7/2473 2.08 ac p.14-862
- 0600046002 ㉑ FARLEY DEWEY R. AND SARITA J. 245-715 12/19/1989 1.865 ac p.12-352
- 0600046001 ㉒ TAYLOR CYNTHIA OR.0091-451 10/25/2001 1.865 ac p.12-352
- 0600097000 ㉓ MAYNARD HARVEY L. AND LYNN S. 219-816 3/17/1983 1.748 ac p.8-609
- 0600846001 ㉔ Richard L. and Susie E. Watson OR.192-2888 11/3/2006 1.478 ac p.19-855
- 0600846003 ㉕ STROUSE LOIS E. AND JAMES D. 232-174 8/29/1986 238-885 4/26/1988 1.5 ac p.10-598
- 0600854001 ㉖ Richard and Lori Edwards OR.193-578 11/20/2006 1.000 ac p.19-869



- △ George F. Dawson Allotment No.1 Plat 13-198 Platted 7/19/1993
- 0600846002 ① EDMONSON SUSAN E. 281-460 11/19/1997 1.0 ac
- △ George F. Dawson Allotment No.2 Plat 17-833 Platted 3/28/2001
- 0600444003 ② DAWSON GEORGE E. AND BARBARA J. OR.0071-2 3/30/2001 1.5 ac
- ◇ Levi A. Miller Allotment No.1 Plat 13-194 Platted 6/29/1993
- 0600845010 ③ BROWN SCOTT AND WENDY 268-410 5/2/1995 4.998 ac
- ◇ Levi A. Miller Allotment No.2 Plat 15-16 Platted 9/27/1993
- 0600845000 ④ WHITSSELL DAVID A. AND CHERYL L. 261-751 9/28/1993 2.5 ac
- 0600845011 ⑤ LOWE, VICTOR A. PARKER, MELANIE S. OR.0009-775 5/27/1998 2.501 ac
- ☆ Replotting and Renumbering of Gerald W. McBride Allotment No.1 Plat 16-864 Platted 9/18/1998
- 0600444001 ⑥ MCBRIDE GERALD W. AND BERTHA M. 209-436 5/8/1980 279-895 9/11/1997 2.227 ac
- 0600444002 ⑦ SOMMERS MARCUS AND PAMELA OR.0071-77 3/30/2001 0.834 ac
- Sechriest Subdivision Plat 17-769 Platted 1/24/2001
- 0600145003 ⑧ Ralph E. and Carol A. Sechriest OR.266-949 12/14/1994 1.000 ac p.17-769
- Sechriest Subdivision - First Addition Plat 18-820 Platted 12/2/2003
- 0600145004 ⑨ Ralph E. and Carol A. Sechriest OR.199-2473 9/12/2007 1.407 ac p.18-820
- 🏠 Watson-Strouse Subdivision Plat 17-688 Platted 11/7/2000
- 0600845005 ⑩ STROUSE STEPHANIE E. OR.0110-283 4/17/2002 0.944 ac
- 0600845003 ⑪ STROUSE JAMES D. AND LOIS E. OR.0063-134 11/28/2000 0.907 ac
- 0600846006 ⑫ PATTERSON JAMES L. AND ROSEL A. OR.0065-100 1/3/2001 2.524 ac



Last Revision: 4/25/2008

**T-9, R-7, 1st QTR.
LOTS 4, 8, 13, 18
HARDY TWP.
HOLMES COUNTY, OHIO**

H-17