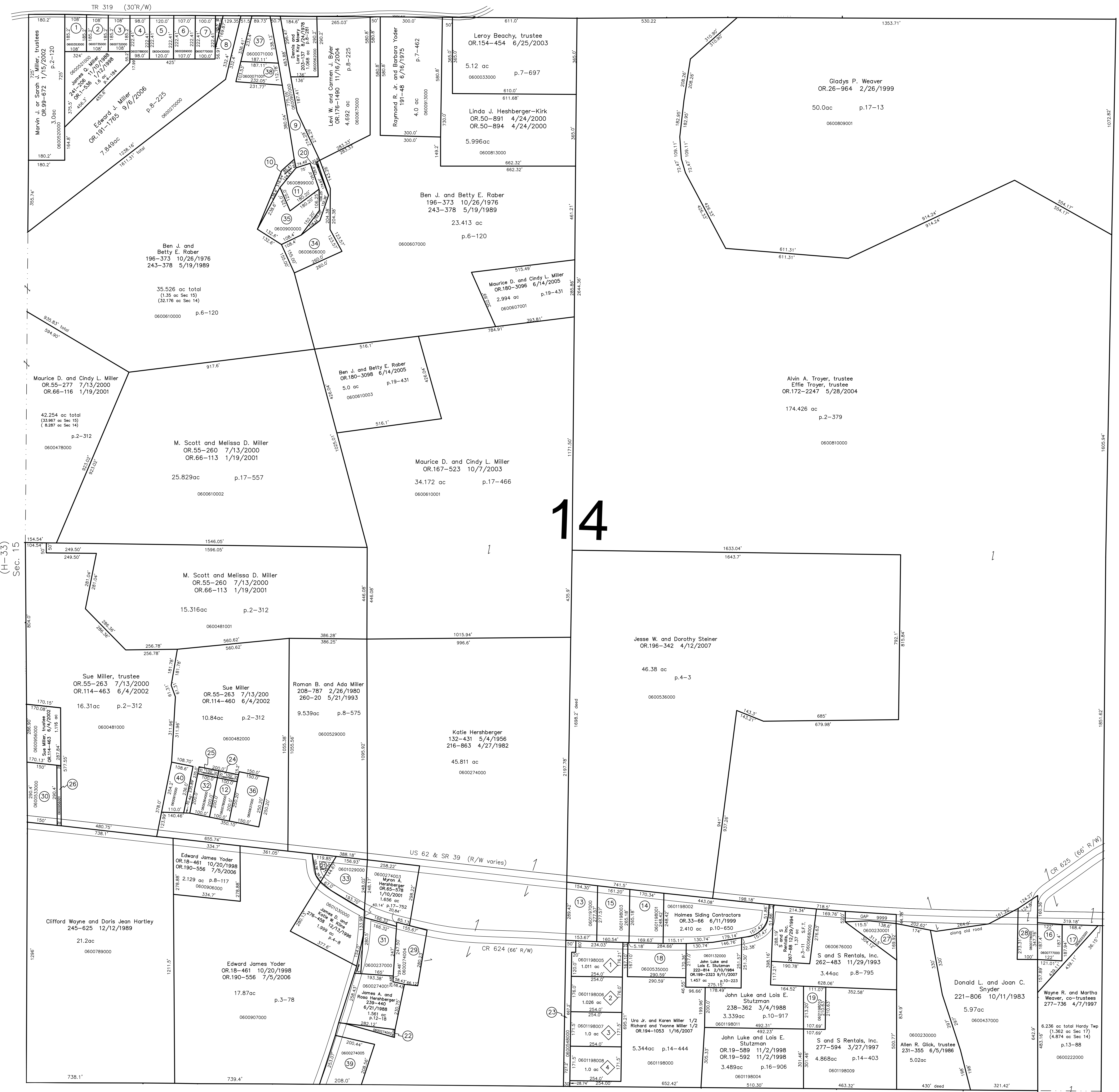


- 0600353000 ① Michael R. Howarth
OR.96-534 12/18/2001
0.50 ac p.4-184
- 0600735000 ② W. Tom Terwilliger and Joseph Kennedy
OR.180-667 5/18/2005
0.459 ac p.8-93
- 0600732000 ③ W. Tom Terwilliger and Joseph Kennedy
OR.180-667 5/18/2005
0.459 ac p.8-93
- 0600788000 ④ Paul and Peggy Swartztruber
199-544 9/29/1977
274-640 8/5/1996
0.50 ac p.5-147
- 0600430000 ⑤ Carol A. Helm aka Van Natta
OR.140-180 2/27/2003
0.61 ac p.5-147
- 0600269000 ⑥ Jeremy L. and Jonelle D. Yoder
OR.191-2669 9/20/2006
0.59 ac p.7-105
- 0600770000 ⑦ June L. Roberts
268-330 4/26/1995
OR.6-974 4/14/1998
OR.62-838 11/21/2000
0.51 ac p.7-108
- 0600769000 ⑧ June L. Roberts
268-330 4/26/1995
OR.6-974 4/14/1998
OR.62-838 11/21/2000
0.51 ac p.8-394
- 0600901000 ⑨ Allen A. and Maureen E. Yoder
204-113 11/21/1978
1.372 ac p.9-9
- 0600902000 ⑩ Allen A. and Maureen E. Yoder
204-113 11/21/1978
1.372 ac p.9-9
- 0600899000 ⑪ Allen A. and Maureen E. Yoder
184-384 8/22/1973
246-610 3/26/1990
0.59 ac p.7-68
- 0600780000 ⑫ Steven J. and Terrie A. Glouque
OR.181-1326 7/1/2005
0.459 ac p.4-72
- 0601197000 ⑬ Holmes Sliding Contractors
228-544 11/27/1985
1.0 ac p.10-503
- 0601198001 ⑭ Holmes Sliding Contractors
241-639 12/31/1988
1.0 ac p.10-650
- 0601198003 ⑮ Holmes Sliding Contractors
233-595 12/10/1986
1.0 ac p.10-664
- 0600777000 ⑯ Donald L. and Joan C. Snyder
255-101 4/7/1992
0.51 ac p.3-188
- 0600222001 ⑰ Donald L. and Joan C. Snyder
239-108 5/23/1989
0.628 ac p.10-990
- 0600535000 ⑱ Holmes Sliding Contractors, Ltd.
OR.192-380 10/5/2006
1.124 ac p.14-444
- 0601198010 ⑳ S and S Rentals, Inc.
277-594 3/27/1997
0.532 ac p.14-403
- 0600606001 ㉑ Allen A. and Maureen E. Yoder
278-754 6/25/1997
0.0163 ac p.16-459
- 0600907001 ㉒ Laner Corporation
OR.101-202 1/28/2002
0.201 ac p.16-896
- 0600274002 ㉓ James A. and Rosa Hershberger
OR.63-570 12/4/2000
0.114 ac p.17-713
- 0600548000 ㉔ Hidden Valley Acres, Ltd.
OR.42-312 11/17/1989
0.551 ac p.2-94
- 0600779000 ㉕ Steven J. and Terrie A. Glouque
OR.181-1326 7/1/2005
0.08 ac p.6-120
- 0600365000 ㉖ Robert L. and Roberta S. Kasner
178-429 11/5/1970
196-386 11/12/1976
273-620 5/22/1996
OR.186-1932 2/3/2006
0.08 ac p.5-9
- 0600956001 ㉗ Sue Miller Trustee
OR.114-463 6/4/2002
0.13 ac
- 0600230001 ㉘ Allen R. Glick, Trustee
231-355 6/5/1986
0.53 ac
- 0600778000 ㉙ Donald L. and Joan C. Snyder
215-296 11/10/1981
0.71 ac
- 0600274004 ㉚ Donald M. and Joann Shoup
OR.101-627 1/30/2002
0.628 ac p.16-184
- 0600533000 ㉛ Triple M, Ltd.
OR.149-895 5/21/2003
1.0 ac
- 0600237000 ㉜ Henry O. Graft, trustee
OR.37-908 8/31/1999
1.0 ac
- 0600364000 ㉝ Robert L. and Roberta S. Kasner
178-429 11/5/1970
196-386 11/12/1976
273-620 5/22/1996
OR.186-1932 2/3/2006
0.459 ac p.4-62
- 0601029000 ㉞ Laner Corporation
OR.101-202 1/28/2002
0.901 ac p.8-863
- 0600606000 ㉟ Ben J. and Betty E. Rober
202-500 7/6/1978
1.1307 ac p.8-225
- 0600900000 ㊱ Allen A. and Maureen E. Yoder
192-499 11/28/1975
246-610 3/26/1990
1.06 ac p.7-539
- 0600637000 ㊲ Kayann Robb
181-55 9/7/1972
OR.88-69 9/20/2001
0.86 ac p.5/143
- 0600071000 ㊳ Mark R. and Vickie S. Boley
OR.179-3204 5/5/2005
0.733 ac p.19-383
- 0600071001 ㊴ Vickie S. Boley
OR.179-3200 5/5/2005
0.509 ac p.19-383
- 0600274005 ㊵ Glenn and Arlene Miller
OR.181-731 6/28/2005
1.06 ac p.19-438
- 0600915000 ㊶ Phillip R. Yoder, Linda E. Yoder,
Dale E. Yoder, Wilbur D. Yoder
OR.144-992 1/12/2007
0.612 ac p.5-73



(H-33)
Sec. 15

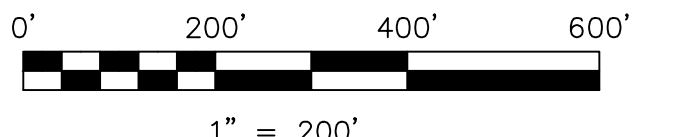
Tranquil Acres Allotment No.1
Plat 13-178 Platted 1/29/1993

- 0601198005 ㊷ Oeorghe and Lida Collet
258-637 2/4/1993
1.011 ac
- 0601198006 ㊸ Cornel and Elena Marza
284-183 4/25/1994
284-195 4/25/1994
1.026 ac
- 0601198007 ㊹ Ellis and Linda Sue Trayer
278-760 9/4/1997
278-763 9/4/1997
1.0 ac
- 0601198008 ㊺ Silvia Tarniceru
OR.19-215 10/29/1998
OR.19-218 10/29/1998
1.0 ac

Last Revision: 9/11/2007

**T-9, R-6, Section 14
HARDY TWP.
HOLMES COUNTY, OHIO**

S.F.T. new survey required
for next transfer



LET IT BE KNOWN, THIS MAP HAS BEEN PREPARED AS A REFERENCE GUIDE TO PROPERTY OWNERSHIP. WE BELIEVE THIS INFORMATION TO BE CORRECT AND CURRENT, HOWEVER IT IS NOT INTENDED FOR ANY LEGAL USE, WHETHER IT BE IN SALES, TRANSFERS, TRACES, LEASES OF ANY TYPE, ETC., AND DO NOT ACCEPT RESPONSIBILITY FOR ERRORS OF ANY NATURE OR OMISSIONS CONTAINED HEREIN.